

Supplement

BRYNDÍS MARTEINSDÓTTIR, ISABEL C. BARRIO AND INGIBJÖRG SVALA Jónsdóttir 2017

Assessing the Ecological Impacts of Extensive Sheep Grazing in Iceland

Icelandic Agricultural Sciences 30, 55 - 72

Appendix S1. Extended list of documents retrieved in the literature search, including bibliographic details (title, authors, year of publication, source), document type, language, status (whether the document was discarded, potentially relevant or data could be extracted), and criteria for exclusion if applicable. (Next page).

Assessing the ecological impacts of sheep grazing in Iceland.

Summary of literature search													
status	title	authors	source	volume	pages	year	search	document type	language	URL	reason for exclusion	opinion	study
data extracted	The nature and restoration of denuded areas in Iceland	Arnalds Ó., Aradóttir Á.L., Þorsteinsson I.	Arctic and Alpine Research	19	518-525	1987	2	published intl	EN	http://www.landbunadur.is/landbunadur/wgsamvef.nsf/6d3d18e301de1f5e0025768c00561c33/b6687990fcd801e00257535004b9bdf/\$FILE/The%20nature%20and%20restoration%20of%20denuded%20areas%20in%20Iceland.pdf	[included]		Auðkúlu- and Eyvindastaðarheiði
data extracted	Uppgræðslutilraunir á Auðkúlu- og Eyvindarstaðaheiði. Áfangaskýrsla 1982.	Helgadóttir Á., Einarsson G., Þorsteinsson I., Guðmundsdóttir K., Tómasson Þ.	Fjölrit RALA	95		1983	R	report	ISL	http://www.landbunadur.is/landbunadur/wgsamvef.nsf/6d3d18e301de1f5e0025768c00561c33/bc36e1dda4944eda0025748e0031398d/\$FILE/Nr%2095.%20Uppgr%C3%A6%C3%B0slutilraunir%20%C3%A1%20Au%C3%B0k%C3%BAlu-%20og%20Eyvindarsta%C3%B0ahei%C3%B0i.%20F-Rala.pdf	[included]		Auðkúlu- and Eyvindastaðarheiði
data extracted	Uppgræðsla á Auðkúluheiði og Eyvindarstaðaheiði 1981 – 1989	Þorsteinsson I.	Fjölrit RALA	151		1991	1	report	ISL	http://www.landbunadur.is/landbunadur/wgsamvef.nsf/6d3d18e301de1f5e0025768c00561c33/bb17cf99e5e6a27e00257495003248b1/\$FILE/Nr%20151.%20Uppgr%C3%A6%C3%B0sla%20%C3%A1%20Au%C3%B0k%C3%BAluhei%C3%B0i%20og%20Eyvindarsta%C3%B0ahei%C3%B0i.%20F-Rala.pdf	[included]		Auðkúlu- and Eyvindastaðarheiði
data extracted	Rannsóknir á uppgræðsluvæðum á Auðkúlu- og Eyvindarstaðaheiði. Áfangaskýrsla 1986 til Landsvirkjunar	Aradóttir Á.L., Thorsteinsson I., Guðmundsdóttir K.	Fjölrit RALA	123	2-29	1987	R	report	ISL	National library	Secondary data		Auðkúlu- and Eyvindastaðarheiði
data extracted	Jarðvegur í landgræðslutilraunum á virkjanasvæði Blöndu	Arnalds Ó., Pálmasson F.	Fjölrit RALA	118		1986	R	report	ISL	http://www.landbunadur.is/landbunadur/wgsamvef.nsf/6d3d18e301de1f5e0025768c00561c33/c1020814447445440025748e00486b55/\$FILE/Nr%20118.%20Jar%C3%B0vegur%20%C3%AD%20landgr%C3%A6%C3%B0slutilraunum%20%C3%A1%20virkjunarsv%C3%A6%C3%B0i%20Bl%C3%B0ndu.%20F-Rala.pdf	Secondary data		Auðkúlu- and Eyvindastaðarheiði
data extracted	Rannsóknir á uppgræðslu, ástandi og beitarþoli gróðurs á Auðkúlu- og Eyvindarstaðaheiði. Áfangaskýrsla 1984. Skýrsla Rannsóknastofnunar landbúnaðarins til Landsvirkjunar.	Rannsóknarstofnun landbúnaðarins	Rannsóknarstofnun landbúnaðarins			1985	R	report	ISL	Private collection	Secondary data		Auðkúlu- and Eyvindastaðarheiði
data extracted	Rannsóknir á uppgræðsluvæðum á Auðkúlu- og Eyvindarstaðaheiði og beartilraun á Auðkúluheiði. Áfangaskýrsla 1985. Skýrsla Rannsóknastofnunar landbúnaðarins til Landsvirkjunar.	Rannsóknarstofnun landbúnaðarins	Rannsóknarstofnun landbúnaðarins			1986	R	report	ISL	National library	Secondary data		Auðkúlu- and Eyvindastaðarheiði
data extracted	Uppgræðslutilraunir á Auðkúlu- og Eyvindarstaðaheiði. Áfangaskýrsla 1981.	Þorgeirsson H., Arnalds Ó., Einarsson G.	Fjölrit RALA	83		1982	R	report	ISL	National library	Secondary data		Auðkúlu- and Eyvindastaðarheiði
data extracted	Rannsóknir á uppgræðsluvæðum á Auðkúlu- og Eyvindarstaðaheiði. Áfangaskýrsla 1987 til Landsvirkjunar	Þorsteinsson I., Magnússon S.H., Guðmundsdóttir K.	Fjölrit RALA	129		1988	R	report	ISL	National library	Secondary data		Auðkúlu- and Eyvindastaðarheiði
data extracted	Rannsóknir á ástandi og beitarþoli gróðurlenda á Auðkúlu- og Eyvindarstaðaheiði 1983	Thorsteinsson I., Arnalds Ó., Aradóttir Á.L.	Rannsóknarstofnun landbúnaðarins			1984	R	report	ISL	National library	Secondary data		Auðkúlu- and Eyvindastaðarheiði
data extracted	Rannsóknir á uppgræðsluvæðum á Auðkúlu- og Eyvindarstaðaheiði. Áfangaskýrsla 1988 til Landsvirkjunar.	Þorsteinsson I., Þorgeirsson H., Guðmundsdóttir K.	Fjölrit RALA	135		1989	R	report	ISL	Private collection	Secondary data		Auðkúlu- and Eyvindastaðarheiði
data extracted	Uppgræðslutilraunir á Auðkúlu- og Eyvindarstaðaheiði og beartilraun á Auðkúluheiði, Áfangaskýrsla 1983.	Þorsteinsson, I.	Fjölrit RALA	105		1984	R	report	ISL	http://www.landbunadur.is/landbunadur/wgsamvef.nsf/6d3d18e301de1f5e0025768c00561c33/9a1ad300b0c9d500025748e003bb0e5/\$FILE/Nr%20105.%20Uppgr%C3%A6%C3%B0slutilraunir...%20F-Rala.pdf	Secondary data		Auðkúlu- and Eyvindastaðarheiði
data extracted	Áhrif beitar á gróður Auðkúluheiðar	Jónsdóttir I.S.	Náttúrufræðingurinn	53	19-40	1984	R	published nat	ISL	http://timarit.is/view_page_init.jsp?pageId=4260653	[included]		Lómatjarnir

data extracted	Utilization and Conservation of Grassland. Progress report 1976.	Arnalds A., Guðmundsson Ó.	Fjölrit RALA	29		1978	1	report	EN	http://www.landbunadur.is/landbunadur/wgsamvef.nsf/6d3d18e301de1f5e0025768c00561c33/7b0c08b41c170dfa002574970057b652/\$FILE/Nr%2029.%20Utilization%20and%20Conservation%20of%20Grassland.%20F-Rala.pdf	[included]		Utilization and Conservation of Grasslands
data extracted	Landnýtingartilraunir 1979	Guðmundsson Ó., Arnalds A.	Fjölrit RALA	63		1980	1	report	ISL	http://www.landbunadur.is/landbunadur/wgsamvef.nsf/6d3d18e301de1f5e0025768c00561c33/73a963d1b10d6de50025749800348145/\$FILE/Nr%2063.%20Landn%C3%BDtingartilraunir.%20F-Rala.pdf	[included]		Utilization and Conservation of Grasslands
data extracted	Utilization and Conservation of Grassland. Progress report 1977.	Guðmundsson Ó., Arnalds A.	Fjölrit RALA	38		1978	1	report	EN	http://www.landbunadur.is/landbunadur/wgsamvef.nsf/d7902c93776cd15300256abe00557fcc/db76defe363fbd100257497005d8d24/\$FILE/Nr%2038.%20Utilization%20and%20Conservation%20of%20Grassland.%20F-Rala.pdf	[included]		Utilization and Conservation of Grasslands
data extracted	Utilization and Conservation of Grassland. Progress report 1978.	Guðmundsson Ó., Arnalds A.	Fjölrit RALA	50		1979	1	report	EN	http://www.landbunadur.is/landbunadur/wgsamvef.nsf/6d3d18e301de1f5e0025768c00561c33/c6dc2c26bf2f244800257497005d9c86/\$FILE/Nr%2050.%20Utilization%20and%20Conservation%20of%20grassland.%20F-Rala.pdf	[included]		Utilization and Conservation of Grasslands
data extracted	Landnýtingartilraunir 1980	Magnúsdóttir R., Bjarnason V.	Fjölrit RALA	79		1981	R	report	ISL	http://www.landbunadur.is/landbunadur/wgsamvef.nsf/6d3d18e301de1f5e0025768c00561c33/88b20d504c0aacb10025748900399eaf/\$FILE/Nr%2079.%20Landn%C3%BDtingartilraunir,%20%C3%A1fangask%C3%BDrsla%201980.%20F-Rala.pdf	[included]		Utilization and Conservation of Grasslands
data extracted	Rannsóknir á gróðri og plöntuvali sauðfjár í beitartilraun á Auðkúluheiði.	Magnússon B., Magnússon S.H.	Fjölrit RALA	159		1992	1	report	ISL	http://www.landbunadur.is/landbunadur/wgsamvef.nsf/6d3d18e301de1f5e0025768c00561c33/48c6aa1ce671d23f002574950037bdf/\$FILE/Nr%20159.%20Rann%C3%B3knir%20%C3%A1%20gr%C3%B3%C3%B0ri%20og%20pl%C3%B0ntuvali%20sau%C3%B0fj%C3%A1r...%20F-Rala.pdf	[included]		Utilization and Conservation of Grasslands
data extracted	Áhrif beitarþunga á uppskeru, gróðurnýtingu og arðsemi sauðfjárbeitar	Arnalds A.	Ráðunautafundur		21-27	1981	1	conference proceedings	ISL	http://www.landbunadur.is/landbunadur/wgsamvef.nsf/6d3d18e301de1f5e0025768c00561c33/8a45f13528753a8c002572ff00360b7e/\$FILE/%C3%81hrif%20beitar%20%C3%BEunga%20%C3%A1%20uppskeru....Rad%201981.pdf	Secondary data		Utilization and Conservation of Grasslands
data extracted	Uppskeyra í beitartilrauninum	Arnalds A.	Ráðunautafundur	4	329-342	1978	R	conference proceedings	ISL	National library	Secondary data		Utilization and Conservation of Grasslands
data extracted	Utilization and Conservation of Grassland. Progress report 1975.	Arnalds A., Guðmundsson Ó.	Fjölrit RALA	2		1976	R	report	EN	National library	Secondary data		Utilization and Conservation of Grasslands
data extracted	Beitarálag metið með mælingum á gróðri	Pálmason F.	Íslenskar Landbúnaðar-rannsóknir	14	47-54	1982	1	published nat	ISL	National library	Secondary data		Utilization and Conservation of Grasslands
data extracted	Gróðurfar í beitartilraunum	Þorsteinsson I., Gíslason Ó.	Ráðunautafundur	4	343-352	1978	R	conference proceedings	ISL	National library	Secondary data		Utilization and Conservation of Grasslands
data extracted	Áhrif beitar á gróðurfar	Þorsteinsson I., Guðjonsson G.	Ráðunautafundur		28-52	1981	1	conference proceedings	ISL	http://www.landbunadur.is/landbunadur/wgsamvef.nsf/6d3d18e301de1f5e0025768c00561c33/774d29541e9b0ac5002572ff0036adf1/\$FILE/%C3%81hrif%20beitar%20%C3%A1%20gr%C3%B3%C3%B0urfar%20Rad%201981.pdf	Secondary data		Utilization and Conservation of Grasslands
data extracted	Uppgræðsla og ræktun afréttarlanda	Friðriksson S.	Árbók Landbúnaðarins	11	201-218	1960	R	publication series	ISL	National library	[included]		Biskupstungaafrétt
data extracted	Áburðartilraunir á Biskuptungnaafrétti	Þorsteinsson I., Sigurbjörnsson B.	Árbók Landbúnaðarins 1961 (Editor: Sigurjónsson A.)		28-46	1961	R	publication series	ISL	National library	[included]		Biskupstungaafrétt

data extracted	Blöndulón Vöktun á strandrofi og áfoki	Magnússon B., Metúsalemsson S.	Áfangaskýrsla			2014	O	report	ISL	http://utgafa.ni.is/skyrslur/2015/NI-15004.pdf	[included]		Blöndulón
data extracted	Gróðurannsóknir í Hallormsstaðaskóg	Ragnarsson H., Steindórrson S.	Ársrit skógrættarfélags Íslands		32-59	1963	R	publication series	ISL	http://skog.is/skjol/Rit1963/#/58/zoomed	[included]		Hallormsstaður A
data extracted	Changes in air and soil temperatures in three Icelandic birch forests with different land-use histories	Hecht B.P., Vogt K.A., Eysteinnsson Þ., Vogt D.J.	Icelandic Agricultural Sciences	20	49-60	2007	2	published intl	EN	http://www.landbunadur.is/landbunadur/wgsamvef.nsf/6d3d18e301de1f5e0025768c00561c33/aafef09111d45e28002573d300403497/\$FILE/Changes%20in%20air.pdf	[included]		Hallormsstaður C
data extracted	Gróðurannsóknir vegna hættu á áfoki frá Háslóni	Arnalds Ó., Aradóttir Á.L., Svavarsdóttir K.	Rit LBHÍ	27		2010	O	publication series	ISL	https://rafhladan.is/handle/10802/9376	[included]		Háslón
data extracted	Effects of sheep grazing on tiller size and population dynamics in a clonal sedge (Carex bigelowii)	Jónsdóttir I.S.	Oikos	62	177-188	1991	R	published intl	EN	https://www.jstor.org/stable/3545263?seq=1#page_scan_tab_contents	[included]		Auðkúlu- and Hnausheiði
data extracted	Tíðnidreifing blómplantna í Hornstrandarfríðlandi eftir mislanga friðun frá búfjárbætti	Einarsdóttir K.	Náttúrustofa Vestfjarða	05-06		2006	O	report	ISL	http://nave.is/utgefing_efni/skra/116/	[included]		Hornstrandar- fríðland
data extracted	Long-term monitoring of vegetation succession after grazing exclusion in an Icelandic birch forest	Þorsteinsson B.	Sustainable grazing in subarctic environments with regard to vegetation and soil processes (Editor: Olsen)		46-48	2014	R	conference proceedings	EN	http://www.bioforsk.no/ikbViewer/Content/122586/Olsen%20et%20al%202014_Workshop%20sustainable%20grazing.pdf	[included]		Húsafellsskógur
data extracted		Þorsteinsson B., Þórhallsdóttir A.G.	Ráðunautafundur		201-203	2003	R	conference proceedings	ISL	http://landbunadur.is/landbunadur/wgsamvef.nsf/key2/rsjr5kbbbx.html	[included]		Húsafellsskógur
data extracted	The Impacts of Sheep Grazing on Bryophyte Communities in Iceland	Liebig E.C.	MSc thesis			2016	1	thesis	EN	http://skemman.is/item/view/1946/24891;jsessionid=F2874E80958EF767D99FC1930631925E	[included]		Tundra diversity
data extracted	Effects of local and regional drivers on plant diversity within tundra landscapes	Mörsdorf M. A.	PhD thesis, University of Iceland			2015	2	thesis	EN	http://skemman.is/en/item/view/1946/23283	[included]		Tundra diversity
data extracted	Uppgræðslutilraun á Mosfellsheiði	Friðriksson S.	Íslenskar Landbúnaðar- rannsóknir	1		1969	O	published nat	ISL	National library	[included]		Mosfellsheiði
data extracted	Áhrif beitarfriðunar á framvindu gróðurs og jarðvegs á lítt grónu landi	Magnússon S. H., Svavarsdóttir K.	Fjölrit Náttúrufræðistofnunar	49		2007	O	report	ISL	http://utgafa.ni.is/fjolrit/Fjolrit_49.pdf	[included]		Örfoka
data extracted	Áhrif beitar á lítt grónu landi og gildi beitarstýringar	Magnússon S.H.	Fræðaðing landbúnaðarins		150-158	2008	1	conference proceedings	ISL	http://www.landbunadur.is/landbunadur/wgsamvef.nsf/6d3d18e301de1f5e0025768c00561c33/59a00fd6b31ab96c002574790035f3f4/\$FILE/%C3%81hrif%20beitar%20%C3%A1%20litt%20gr%C3%B3nu%20landi.pdf	Secondary data		Örfoka
data extracted	Sauðfé og gróður	Þorsteinsson I.	Tíminn		8-9,13	1961	R	newspaper	ISL	http://timarit.is/view_page_init.jsp?issId=61557&pageId=1044014&lang=is&q=SAU%D0F%C9%20OG%20og%20og%20gr%F3%F0ur%20og	[included]		RANGE - Borgarfjörður
data extracted	Gróðurvernd	Þorsteinsson I.	Rit Landverndar	2		1971	R	report	ISL	National library	Secodary data		RANGE - Borgarfjörður
data extracted	Gróður og landnýting	Þorsteinsson I.	Rit Landverndar	3	26-37	1973	R	publication series	ISL	National library	Secondary data		RANGE - Borgarfjörður
data extracted	Gróður í Viðey í Þjórsá: áhrif beitarfriðunar	Valdimarsdóttir A.S., Magnússon S.H.	Náttúrufræðingurinn	83	49-60	2013	O	published nat	ISL	National library	[included]		Viðey
potentially relevant	Friðun Þórsmerkursvæðisins	Arnalds A.	Ársrit skógrættarfélags Íslands		89-98	1990	1	publication series	ISL	http://www.landbunadur.is/landbunadur/wgsamvef.nsf/6d3d18e301de1f5e0025768c00561c33/22f607eff5fea66800257a9a0040b65f/\$FILE/Fri%C3%B0un%20%C3%BE%C3%B3rsmerkursv%C3%A6%C3%B0isins-.pdf	no data	opinion	
potentially relevant	Biskupstungnaafréttur með augum bónda	Arnór Karlsson	Græðum Ísland. Landgræðslan 1991– 1992. Árbók IV (ritstj. Andrés Arnalds)		83-92	1992	O	Publication series	ISL	http://land.is/wp-content/uploads/2015/11/graedum_island_1991_19921.pdf	no data	opinion	

potentially relevant	Beitarnýting afrétta á miðhálandi Íslands.	Barkarson B.H.	MSc thesis			2002	2	thesis	ISL	National library	no data	opinion	
potentially relevant	Nýting afrétta á miðhálandi Íslands	Barkarson B.H.	Ráðunautafundur		67-73	2003	1	conference proceedings	ISL	http://www.landbunadur.is/landbunadur/wgsamvef.nsf/6d3d18e301de1f5e0025768c00561c33/cc33464c7a8fd4700256cc60047858a/\$FILE/bhb.pdf	no data	opinion	
potentially relevant	Beit og gróður	Bjarnasson, Á.H.	Ársrit skógræktarfélag Íslands		40-47	1979	R	publication series	ISL	http://www.skog.is/skjol/Rit1979/#/3/zoomed	no data	opinion	
potentially relevant	Gróðurthuganir á girta svæðinu við Geysi í Haukadal 1960-1980	Davíðsson, I	Náttúrufræðingurinn	51	132-140	1981	R	published nat	ISL		no data	opinion	
potentially relevant	Beitarnýting láglendis	Dýrmundsson Ó.R.	Freyr	75	316-339	1979	R	publication series	ISL	National library	no data	opinion	
potentially relevant	Gróðurvernd með hliðsjón af búfjárhaldi og beitarmálum.	Dýrmundsson Ó.R.	Freyr	86	215-226	1990	R	publication series	ISL	National library	no data	opinion	
potentially relevant	Íslensk sauðfjárrækt í ljósi sjálfbærrar þróunar	Dýrmundsson Ó.R.	Ráðunautafundur		240-246	2002	1	conference proceedings	ISL	http://www.landbunadur.is/landbunadur/wgsamvef.nsf/6d3d18e301de1f5e0025768c00561c33/54e34830336b857700256c4f003f7333?OpenDocument&Highlight=0,beit,sau%C3%B0f%C3%A9	no data	opinion	
potentially relevant	Sustainability of sheep and goat production in North European countries – From the Arctic to the Alps.	Dýrmundsson Ó.R.	Small Ruminant Research	62	151-157	2006	R	published intl	EN	http://www.sciencedirect.com/science/article/pii/S092144880500341X	no data	opinion	
potentially relevant	Skipulag beitarmála í landinu með hliðsjón af tiltækri þekkingu og reynslu	Dýrmundsson Ó.R.	Ráðunautafundur		127-135	1981	1	conference proceedings	ISL	http://www.landbunadur.is/landbunadur/wgsamvef.nsf/6d3d18e301de1f5e0025768c00561c33/798f19a9b7082bda00257300005367a8/\$FILE/Skipulag%20beitarm%C3%A1la%20%C3%AD%20landinu...%20Rad%201981.pdf	no data	opinion	
potentially relevant	Skipulagning beitarmála í landinu með hliðsjón af tiltækri þekkingu og reynslu	Dýrmundsson Ó.R.	Freyr	77	331-336	1981	R	publication series	ISL	National library	no data	opinion	
potentially relevant	Umhverfissvæn búfjárrækt - almenn viðhorf	Dýrmundsson Ó.R.	Ráðunautafundur		1-10	1993	1	conference proceedings	ISL	http://landbunadur.is/landbunadur/wgsamvef.nsf/key2/index.html	no data	opinion	
potentially relevant	Vor og haustbeit sauðfjár	Dýrmundsson Ó.R., Guðmundsson Ó.	Ráðunautafundur		205-213	1987	R	conference proceedings	ISL	http://www.landbunadur.is/landbunadur/wgsamvef.nsf/0/7ca05ccf692975650025716f004e2127/\$FILE/1987-ORD&OG.pdf	no data	opinion	
potentially relevant	Landgræðsla og sauðfjárrækt	Einarsson G.	Ráðunautafundur		39-44	2003	1	conference proceedings	ISL	http://www.landbunadur.is/landbunadur/wgsamvef.nsf/6d3d18e301de1f5e0025768c00561c33/e8ece637d1ccaac700256cc50030caf3?OpenDocument&Highlight=0,beit,sau%C3%B0f%C3%A9	no data	opinion	
potentially relevant	Grass and grass utilization in Iceland	Friðriksson S.	Ecology	3	785-796	1972	O	published intl	EN	https://www.jstor.org/stable/1934294	no data	opinion	
potentially relevant	Verðmæti gróðurlendis og hófleg nýting þess	Friðriksson S.	Samvinnan		22-23	1972	O	publication series	ISL	http://timarit.is/view_page_init.jsp?pageId=4293499	no data	opinion	
potentially relevant	Gróðurbreytingar í Þjórsárdal	Guðjónsson G.	Íslenskar Landbúnaðar-rannsóknir	12	27-55	1980	O	publication series	ISL	National library	no data	opinion	
potentially relevant	Beitartilraunir á úthaga á láglendi	Guðmundsson Ó.	Ráðunautafundur		75-87	1981	1	conference proceedings	ISL	http://www.landbunadur.is/landbunadur/wgsamvef.nsf/6d3d18e301de1f5e0025768c00561c33/c398223cbb5c48b1002572ff003a410d/\$FILE/Beitartilraunir%20%C3%A1%20%C3%BAthaga%20%C3%A1%20l%C3%A1glendi.%20Rad%201981.pdf	no data	opinion	
potentially relevant	Nýting beitilanda	Guðmundsson Ó.	Græðum Ísland. Landgræðslan 1988. Árbók II (Ritsjórar: Arnalds A. & Þórhallsdóttir A.G.)		178-180	1989	O	publication series	ISL	National library	no data	opinion	
potentially relevant	„Góði hirðirinn“ – um úthagabeit sauðfjár	Jónsdóttir S.	Fræðaðing landbúnaðarins		158-163	2008	1	conference proceedings	ISL	http://www.landbunadur.is/landbunadur/wgsamvef.nsf/6d3d18e301de1f5e0025768c00561c33/67c2641f2004cc6e00257479003dc276/\$FILE/G%C3%B3%C3%B0i%20hir%C3%B0irinn.pdf	no data	opinion	

potentially relevant	Gróður í beitarfriðuðum hölmum á Auðkúluheiði og í Svartárbugum.	Kristinsson H.	Týli	9	33-46	1979	O	publication series	ISL	National library	no data	opinion	
potentially relevant	Sauðfjárbúskapur og nýting beitalanda	Maronsson B.P.	Ráðunautafundur		204-209	2002	1	conference proceedings	ISL	http://www.landbunadur.is/landbunadur/wgsamvef.nsf/6d3d18e301de1f5e0025768c00561c33/0a054d94d95d6f2d00256c300004c659/\$FILE/bm.pdf	no data	opinion	
potentially relevant	Sheep grazing in the North Atlantic region: a long-term perspective on environmental sustainability	Ross L.C., Austrheim G., Asheim L.J., Bjarnason G., Feilberg J., Fosaa A.M., Hester A.J., Holand Ö., Jónsdóttir I.S., Mortensen L.A., Myrsterud A., Olsen E., Skonhoft A., Speed J.D.M., Steinheim G., Thompson D.B.A., Thórhallsdóttir A.G.	AMBIO	45	551-566	2016	R	published intl	EN	http://link.springer.com/article/10.1007/s13280-016-0771-z	no data	opinion	
potentially relevant	Mynd frá landbúnaðarsýningu íslenskra sveita	Sigurður Blöndal	Ársrit skógræktarfélags Íslands		37-39	1979	O	Publication series	ISL	http://skog.is/skjol/Rit1979/files/assets/basic-html/page40.html	no data	opinion	
potentially relevant	Gróðurbreytingin frá landnámi	Steindórsson S.	Rit Landverndar	10	11-51	1994	O	publication series	ISL	National library	no data	opinion	
potentially relevant	Biskupstungnaafréttur - Eignarhald, nýting, uppgræðsla	Þórarinnsson Þ.	Ráðunautafundur		74-76	2003	1	conference proceedings	ISL	http://www.landbunadur.is/landbunadur/wgsamvef.nsf/6d3d18e301de1f5e0025768c00561c33/9d2dd2185dff3da00256cc600514581/\$FILE/thth.pdf	no data	opinion	
potentially relevant	Áhrif beitar á gróðurfar og landslag	Þórhallsdóttir A.G.	Ráðunautafundur		60-65	2003	1	conference proceedings	ISL	http://www.landbunadur.is/landbunadur/wgsamvef.nsf/6d3d18e301de1f5e0025768c00561c33/687cb582f5fded2400256c3000032393/\$FILE/ala.pdf	no data	opinion	
potentially relevant	Beitarval og bætt nýting beitalands	Þórhallsdóttir A.G.	Ráðunautafundur		34-40	1989	R	conference proceedings	ISL	National library	no data	opinion	
potentially relevant	Iceland	Þórhallsdóttir A.G., Jónsdóttir I.S., Magnússon B.	Sheep grazing in the North-Atlantic region A long term perspective on management, resource economy and ecology (Austrheim et al)		22-42	2008	R	report	EN	https://www.ntnu.no/c/document_library/get_file?uuid=e2e0669d-3964-4a28-b8a0-5eb7b0a0c033&groupId=10476	no data	opinion	
potentially relevant	Menningarlandslag og landnýting	Þórhallsdóttir A.G., Þorsteinsson B., Karlsdóttir A.	Ráðunautafundur		289-292	2002	1	conference proceedings	ISL	http://www.landbunadur.is/landbunadur/wgsamvef.nsf/6d3d18e301de1f5e0025768c00561c33/d1af05fffe97010e00256bec00676444?OpenDocument&Highlight=0,beit,sau%C3%B0f%C3%A9	no data	opinion	
potentially relevant	Gildi úthagans og beitarþolsrannsóknir	Þorsteinsson I.	Íslenskar Landbúnaðar-rannsóknir	12	5-10	1981	R	published nat	ISL	National library	no data	opinion	
potentially relevant	Rannsóknir-Landnýting	Þorsteinsson I.	Íslenskar Landbúnaðar-rannsóknir	12	149-151	1981	R	published nat	ISL	National library	no data	opinion	
potentially relevant	Range resources of Iceland	Þorsteinsson I., Ólafsson, Van Dyne G.M.	Journal of Range Management	24	86-93	1971	R	published intl	EN	https://journals.uair.arizona.edu/index.php/jrm/article/viewFile/5895/5505	no data	opinion	
potentially relevant	Landeyðingin	Þorsteinsson, I.	Samvinnan		21-22	1972	O	publication series	ISL	http://timarit.is/view_page_init.jsp?pageId=4293499	no data	opinion	
potentially relevant	Búfé og gróður	Þorvaldsson G.	Bændablaðið	5	22	2003	1	newspaper	ISL	http://www.landbunadur.is/landbunadur/wgsamvef.nsf/0/4238f01e33f82a5e00256d56003078a8?OpenDocument	no data	opinion	

potentially relevant	Rannsókn á áhrifum beitar á gróðurfar í landmannaafrett	Þorsteinsson, I.	Náttúrufræðingurinn	33	187-203	1964	O	published nat	ISL	http://timarit.is/view_page_init.jsp?issId=290243&pageId=4256920&lang=is&q=%E1%20%20E1hrifum%20beitar%20%20E1%20gr%20F3%20F0urfur%20Landmannaafrett%20%20E1	no data	opinion	
potentially relevant	Afréttarnotkun í Biskupstungum	Davíð Pálsson	Græðum Ísland Landgræðslan 1988. Árbók II (ritstj. Andrés Arnalds & Anna Guðrún Þórhallsdóttir)		151-160	1989	O	publication series	ISL	National library	no data	opinion	
potentially relevant	Ástand lands í Krýsuvík sumarið 1997. Áætlun um uppgæðslu. Skýrsla unnin fyrir bæjarstjórn Hafnarfjarðar	Magnússon, S.H.	Náttúrufræðistofnun Íslands			1998	O	report	ISL	http://utgafa.ni.is/skyrslur/1997/shm-krysuviik-1998-minni.pdf	no data		
potentially relevant	Spring Grazing on Icelandic Rangelands: a Review of Factors to Consider	Archer S., Arnalds A.	Íslenskar Landbúnaðar-rannsóknir	14	55-68	1982	O	publication series	ISL	http://www.landbunadur.is/landbunadur/wgsamvef.nsf/6d3d18e301de1f5e0025768c00561c33/c410598c258bfd100025768f003ef93d/\$FILE/%C3%8DS1.%20Landb%C3%BA.%20Spring%20Grazing%20on%20Icelandic%20Rangelands.%20A%20Review%20of%20Factors%20to%20consider..pdf	no data		
potentially relevant	Rangeland grazing for sheep and goat in Iceland	Dýrmundsson Ó.R.	InterNorden 32 Meeting			2014	O	conference proceedings	EN	http://www.nsg.no/getfile.php/_NSG-PDF-filer/Om%20NSG/InterNorden/2014/%C3%93lafur%20R%20Dyrmundsson%20_%20summary%20_%20%20Rangeland%20grazing%20in%20Iceland.pdf	no data		
potentially relevant		Dýrmundsson Ó.R.	Ráðnautafundur			1989	1	conference proceedings	ISL	http://www.landbunadur.is/landbunadur/wgsamvef.nsf/0/87f6d0d64075b0c5002570bd00520cc7/\$FILE/1989-ORD.pdf	no data		
potentially relevant		Geirsson Ó.	Freyr	5	222-223	1995	1	publication series	ISL	http://www.landbunadur.is/landbunadur/wgsamvef.nsf/6d3d18e301de1f5e0025768c00561c33/f1c36899605a0ac500256c5f007193d0?OpenDocument&Highlight=0,beit,sau%C3%B0f%C3%A9	no data		
potentially relevant	Environmental characterisation and change in South-western Iceland	Gísladóttir G.	PhD thesis, Stockholm University			1998	R	thesis	EN	Personal copy	no data		
potentially relevant	Beitarþungi, beitarálag og beitarþol	Guðmundsson Ó.	Handbók bænda		178-182	1980	R	publication series	ISL	National library	no data		
potentially relevant	Grazing experiments with livestock in Iceland. - PAST AND PRESENT	Guðmundsson Ó.	NJF Workshop		13	1996	2	conference proceedings	EN	http://www.landbunadur.is/landbunadur/wgsamvef.nsf/6d3d18e301de1f5e0025768c00561c33/b6f00529230e4be900256b43002dcabb?OpenDocument&Highlight=0,grazing,sheep	no data		
potentially relevant	Consultancy Reports for the Project of Utilization and Conservation of Grassland Resources in Iceland	Guðmundsson Ó., Arnalds A.	Fjölrit RALA	61		1980	1	report	EN	http://www.landbunadur.is/landbunadur/wgsamvef.nsf/6d3d18e301de1f5e0025768c00561c33/8c60a29362485a770025749800325d4f/\$FILE/Nr%2061.%20Consultancy%20Reports%20for%20Project%20on%20Utilizaton...%20F-Rala.pdf	no data		
potentially relevant	Extensive sheep grazing in the North	Guðmundsson Ó., Þórhallsdóttir A.G.	Grazing and Pasture Management in the Nordic Countries. Proceedings og NJF-seminar no. 305		52-60	1999	2	conference proceedings	EN	http://www.landbunadur.is/landbunadur/wgsamvef.nsf/6d3d18e301de1f5e0025768c00561c33/ca070517a7a9bae00256b43004b6a8f/\$FILE/Sheep%20grazing-NJF.pdf	no data		
potentially relevant	Áhrif áburðar á gróðurfar úthaga	Hermannsson J., Arnalds A., Þorsteinsson I.	Náttúrufræðingurinn	50	99-107	1980	R	published nat	ISL	http://timarit.is/view_page_init.jsp?pageId=4259923	no data		
potentially relevant	Beitartilraunirnar 1977	Jónmundsson J.V.	Tilraunaskýrsla Bændaskólans á Hvanneyri	27		1978	R	report	ISL	National library	no data		
potentially relevant	Beit á ræktað og óræktað mýrlendi	Óskarsson M.	Freyr	78	683-689	1982	R	publication series	ISL	National library	no data		
potentially relevant	Sheep as endozoochoric seed dispersers in areas of primary succession	Rockwell A.S.	BSc thesis, University of Iceland			2016	1	thesis	EN	http://skemman.is/stream/get/1946/24914/58369/1/Sheep_as_endozoochoric_seed_disperser_in_primary_succession.pdf	no data		

potentially relevant	Studies on the mire vegetation of Iceland	Steindórssón S.	Vísindafélag Íslendinga			1975	R	book	EN	National library	no data		
potentially relevant	Áhrif Blönduvirkjunar á gróður og beitarpól afreitarlands vestan og austan Blöndu	Þorsteinsson I.	OS 80033/ROD 14			1980	R	report	ISL	National library	no data		
potentially relevant	The effect of grazing on stability and development of northern rangelands: A case study of Iceland	Þorsteinsson I.	Grazing Research at Northern Latitudes (ed. Ólafur Guðmundsson).		37-44	1986	R	book	EN	National library	no data		
potentially relevant	Landnýting og landgæði	Þorsteinsson I.	Skógarmál : þættir um gróður og skóga á Íslandi tileinkaðir Hákonni Bjarnasyni sjötugum.		130-145	1977	R	book	ISL	National library	no data		
potentially relevant	Beitartilraun í Hallormstaðaskógi	Þorsteinsson I., Loftsson J., Guðmundsson Ó.	Ársrit skógræktarfélag Íslands		25-32	1983	R	publication series	ISL	http://skog.is/skjol/Rit1983/#3/z	no data		
potentially relevant	Beitartilraunir í skóglendi	Þorsteinsson I., Loftsson J., Guðmundsson Ó.	Ráðunautafundur		14-29	1984	I	conference proceedings	ISL	http://www.landbunadur.is/landbunadur/wgsamvef.nsf/6d3d18e301de1f5e0025768c00561c33/be09956842154d0c0025718800501eef/\$FILE/1984-ITH&JL&OG.pdf	no data		
potentially relevant	Íslensk beitolönd : Hrunamanna-, Flóa- og Skeiðamanna- og Gnúpverjiaafreittir : rannsóknir á íslenskum beitolöndum	Þorsteinsson I., Steindórssón S.	Rit Landbúnaðardeildar, A-flokkur. Atvinnudeild Háskólans	19		1967	O	report	ISL	National library	no data		
potentially relevant	Nýting úthaga -- beitarpungi	Þorsteinsson, Ingv.	Íslenskar Landbúnaðar-rannsóknir	12	113-122	1981	R	publication series	ISL	National library	no data		
potentially relevant	Gróðurfar í beitartilraunalandinu í Sölvholti 1987.	Magnússon B., Magnússon S.H.	Ráðunautafundur		126-131	1989	R	conference proceedings	ISL	http://www.landbunadur.is/landbunadur/wgsamvef.nsf/6d3d18e301de1f5e0025768c00561c33/9e65486db033a5d90025713e003e6291/\$FILE/1989-BM.pdf	no sheep only		
potentially relevant	Áhrif búfjárbættis á gróður framræstrar mýrar í Sölvholti í Flóa.	Magnússon B., Magnússon S.H.	Fjölrit RALA	147		1990	I	report	ISL	http://www.landbunadur.is/landbunadur/wgsamvef.nsf/6d3d18e301de1f5e0025768c00561c33/1e454c4fd13bd5bc00257495003010a7/\$FILE/Nr%20147.%20%C3%81hrif%20b%C3%BAfj%C3%A1rbeitar%20%C3%A1%20gr%C3%B3%C3%B0ur%20fram%C3%A6strar%20m%C3%BDrar%20%C3%AD%20S%C3%B6lvholti%20%C3%AD%20-F1%C3%B3a.%20F-Rala.pdf	no sheep only		
potentially relevant	Studies in the grazing of a drained lowland fen in Iceland	Magnússon B., Magnússon S.H.	Icelandic Agricultural Sciences	4	87-108	1990	I	published intl	EN	http://www.landbunadur.is/landbunadur/wgsamvef.nsf/6d3d18e301de1f5e0025768c00561c33/d0678908862bd43500256f5c003fe874/\$FILE/gr-buv4-bm&shm.PDF	no sheep only		
potentially relevant	Uppgræðsla á Auðkúlu- og Eyvindarstaðaheiði.	Magnússon S.H., Magnússon B.	Fjölrit RALA	180		1995	O	report	ISL	http://www.landbunadur.is/landbunadur/wgsamvef.nsf/6d3d18e301de1f5e0025768c00561c33/b5c00b77b65d5a9600257498004acd55/\$FILE/Nr%20180.%20Uppgr%C3%A6%C3%B0sla%20%C3%A1%20Au%C3%B0k%C3%BAlu-%20og%20Eyvindarsta%C3%B0ahei%C3%B0i.%20F-Rala.pdf	no sheep only		
potentially relevant	Warming, sheep and volcanoes: Land cover changes in Iceland evident in satellite NDVI trends	Raynolds M., Magnússon B., Metúsalemsson S., Magnússon S.H.	Remote Sensing	7	9492-9506	2015	I	published intl	EN	https://www.scopus.com/inward/record.uri?eid=2-s2.0-84939433767&partnerID=40&md5=d74c1effa64a76c0c3104f8669f57236	no sheep only		
discarded	Sumararbeit sauðfjár	Arnalds A.	Ársrit Ræktunarfélags Norðurlands	83	44-80	1986	R	publication series	ISL	http://timarit.is/view_page_init.jsp?pageId=3120458	no ecological impacts	grazing management	

discarded	Sauðfjárbeit á íslenskum afréttum. 1. Áhrif beitarþunga á afurðir	Arnalds A.	Íslenskar Landbúnaðar-rannsóknir	17		1985	1	publication series	ISL	http://www.landbunadur.is/landbunadur/wgsamvef.nsf/6d3d18e301de1f5e0025768c00561c33/bae5e4e316462c180025768f0045dfcf/\$FILE/%C3%8DSL.%20Landb%C3%BA.%20Sau%C3%B0fj%C3%A1rbeit%20%C3%A1%20%C3%ADslenskum%20afi%C3%A9ttum..pdf	no ecological impacts	grazing management	
discarded	Landkostir og landnýting - framtíðarsýn	Arnalds A.	Ráðunautafundur		69-73	2001	1	conference proceedings	ISL	http://www.landbunadur.is/landbunadur/wgsamvef.nsf/6d3d18e301de1f5e0025768c00561c33/800d4b5cee32cc1d00256c4f003f7332/\$FILE/svart-aa.pdf	no ecological impacts	grazing management	
discarded	Um ágang og vörslu búfjár	Arnalds A. , Dagfinnsson S.	Ársrit skógræktarfélag Íslands		50-57	2005	1	publication series	ISL	http://www.landbunadur.is/landbunadur/wgsamvef.nsf/6d3d18e301de1f5e0025768c00561c33/60185f729afdadf70025799d00522523/\$FILE/um_agang-og-vorslu_bufjar.pdf	no ecological impacts	grazing management	
discarded	Tilraunir með áburð á úthaga	Arnalds A., Thorsteinnsson I., Hermannsson J.	Fjölrit RALA	58		1980	R	report	ISL	http://landbunadur.is/landbunadur/wgsamvef.nsf/0/42e5b7dc6e6f300500257498003080d0/\$FILE/Nr%2058.%20Tilraunir%20me%C3%B0%20%C3%A1bur%C3%B0%20%C3%A1%20%C3%BAthaga%201967-1979.%20F-Rala.pdf	no ecological impacts	grazing management	
discarded	Reynsla bænda af láglandisbeit sauðfjár - Niðurstöður könnunar	Bjarnadóttir Þ., Eypórsdóttir E., Sveinbjörnsson J.	Fræðaðing landbúnaðarins		380-383	2004	1	conference proceedings	ISL	http://www.landbunadur.is/landbunadur/wgsamvef.nsf/6d3d18e301de1f5e0025768c00561c33/a91e54426fbdf5f8500256c3d002fe188?OpenDocument&Highlight=0,beit,sau%C3%B0fj%C3%A9	no ecological impacts	grazing management	
discarded	Girðingartækni við stjórnun beitar á Lambeyrum	Daðason Á.E.	Ráðunautafundur		187-191	2002	1	conference proceedings	ISL	http://www.landbunadur.is/landbunadur/wgsamvef.nsf/6d3d18e301de1f5e0025768c00561c33/2ccaf5a4c8cb301100256c30000382ad?OpenDocument&Highlight=0,beit,sau%C3%B0fj%C3%A9	no ecological impacts	grazing management	
discarded	Gæðastýring í sauðfjárrækt	Dýrmondsson Ó.R.	Ráðunautafundur		26-31	2000	1	conference proceedings	ISL	http://www.landbunadur.is/landbunadur/wgsamvef.nsf/6d3d18e301de1f5e0025768c00561c33/9fac819c255f448600256c30000382a4?OpenDocument&Highlight=0,beit,sau%C3%B0fj%C3%A9	no ecological impacts	grazing management	
discarded	The effects on carrying capacity of rangeland pastures.	Dýrmondsson Ó.R., Jónmundsson J.V.	The Impact of Climatic Variations in Agriculture (Eds: Parry M.L., Carter T.R. and Konijn N.T.)		475-487/505-509	1988	R	book	EN	http://link.springer.com/chapter/10.1007/2F978-94-009-2943-2_16	no ecological impacts	grazing management	
discarded	Gæðastýring sauðfjárræktarleiðsla - Nokkur minnisatriði	Hallgrímsson S.	Ráðunautafundur		170-171	2001	1	conference proceedings	ISL	http://www.landbunadur.is/landbunadur/wgsamvef.nsf/6d3d18e301de1f5e0025768c00561c33/590a427764fc2ffb00256c30000382ac?OpenDocument&Highlight=0,beit,sau%C3%B0fj%C3%A9	no ecological impacts	grazing management	
discarded	Tilraunir með að snemmrýja ungar ær að hausti	Hallgrímsson S., Sævarsson S.Ó., Ólafsson H.B.	Ráðunautafundur		259-265	2000	1	conference proceedings	ISL	http://www.landbunadur.is/landbunadur/wgsamvef.nsf/6d3d18e301de1f5e0025768c00561c33/e1df009528cf0c4700256c30000382a5?OpenDocument&Highlight=0,beit,sau%C3%B0fj%C3%A9	no ecological impacts	grazing management	
discarded	Rekstrarskilyrði sauðfjárræktar hér í samanburði við nágrennalönd	Hannesson K.A.	Ráðunautafundur		2-12	1997	1	conference proceedings	ISL	http://www.landbunadur.is/landbunadur/wgsamvef.nsf/6d3d18e301de1f5e0025768c00561c33/1c50a7cfa471f20100256d2c00528488?OpenDocument&Highlight=0,beit,sau%C3%B0fj%C3%A9	no ecological impacts	grazing management	
discarded	Grænifóðurrækt	Jónsdóttir S.	Freyr	5		1995	1	publication series	ISL	http://www.landbunadur.is/landbunadur/wgsamvef.nsf/6d3d18e301de1f5e0025768c00561c33/ca105af8b6f3064200256c5f007116b8?OpenDocument&Highlight=0,beit,sau%C3%B0fj%C3%A9	no ecological impacts	grazing management	
discarded	Afréttir í Skagafirði	Maronsson B.P., Þórðarson H.	Fræðaðing landbúnaðarins		281-284	2006	1	conference proceedings	ISL	http://www.landbunadur.is/landbunadur/wgsamvef.nsf/6d3d18e301de1f5e0025768c00561c33/f73fe7180f56aa4c00257101005772e5/\$FILE/58.pdf	no ecological impacts	grazing management	
discarded	Næringargildi beitargróðurs	Ólafsson G.	Íslenskar Landbúnaðar-rannsóknir	12	127-134	1980	O	published nat	ISL	National library	no ecological impacts	grazing management	
discarded	Gæðastýring í sauðfjárrækt - tæki til framþróuna	Sveinbjörnsson J., Bjarnadóttir E.	Ráðunautafundur		197-203	2002	1	conference proceedings	ISL	http://www.landbunadur.is/landbunadur/wgsamvef.nsf/6d3d18e301de1f5e0025768c00561c33/e6c1cdcbcb9360ed600256c300004c657?OpenDocument&Highlight=0,beit,sau%C3%B0fj%C3%A9	no ecological impacts	grazing management	

discarded	Efnainnihald og meltanleiki nokkurra úthagsplantna II: Rannsóknir á Íslenskum beitolöndum	Þorsteinsson I., Ólafsson G.	Íslenskar Landbúnaðar-rannsóknir	1	45-63	1965	O	publication series	ISL	National library	no ecological impacts	grazing management	
discarded	Fjárfjöldi og fjárfjölgun á Íslandi á landnámsöld	Aðalsteinsson S.	Freyr	77	954-958	1981	R	publication series	ISL	National library	no ecological impacts	opinion	
discarded	Ísland, atvinnuhættir og menning	Guðbjartsson G.	BÓK			1990	R	book	ISL	National library	no ecological impacts	opinion	
discarded	Extensive sheep grazing in oceanic circumpolar conditions	Guðmundsson Ó.	Russian Collection of Agricultural Articles 2001		162-190	2001	1	conference proceedings	EN	http://www.landbunadur.is/landbunadur/wgsamvef.nsf/6d3d18e301de1f5e0025768c00561c33/cb0210e5352ca1b200256b410056405b/\$FILE/Magadan-beit-Lok-010301.pdf	no ecological impacts	opinion	
discarded	Sheep grazing in Iceland	Guðmundsson Ó.	Forskningsnytt	2	14-15	1997	R	publication series	EN	http://www.vaxteko.nu/html/sll/slu/forskningsnytt/FLN97-02/FLN97-02.G.HTM	no ecological impacts	opinion	
discarded	Hefðbundin nýting – Beitarntýjar.	Þórhallsdóttir A.G.	Framtíðanýting hálandis Íslands (ritstj. Hreggviður Norðdahl).		19-22	1991	R	conference proceedings	ISL	National library	no ecological impacts	opinion	
discarded	Landnýting og vistvæn framleiðsla sauðfjárafurða	Arnalds Ó., Þórssón J., Þórarinsdóttir E.F.	Fjölrit RALA	211		2000	R	report	ISL	http://www.landbunadur.is/landbunadur/wgsamvef.nsf/01ab82a63b2d48d0b00256ccc003cf60c/\$FILE/Fjolrit211.pdf	no ecological impacts	sheep behaviour	
discarded	Plöntuval og gæði beitargróðurs á ræktuðu og óræktuðu mýrlendi	Bjarnason V., Bláfeld S.J.	Ráðunautafundur		53-60	1981	R	conference proceedings	ISL	National library	no ecological impacts	sheep behaviour	
discarded	Leadersheep - the unique strain of Iceland Sheep	Dýrmundsson Ó.R.	Animal Genetic Resources	32	45-48	2002	2	published intl	EN	http://www.landbunadur.is/landbunadur/wgsamvef.nsf/6d3d18e301de1f5e0025768c00561c33/1c142f9ae6f204520025713b0048997a/\$FILE/ORD-Joint-Rare-Breeds-8-01.pdf	no ecological impacts	sheep behaviour	
discarded	Beitaratferli og plöntuval sauðfjár og hrossa	Jónsdóttir S.	Ráðunautafundur		133-140	1989	O	conference proceedings	ISL	http://www.landbunadur.is/landbunadur/wgsamvef.nsf/0d683c92d54dd0cdd0025713e003ee1f4/\$FILE/1989-SJ.pdf	no ecological impacts	sheep behaviour	
discarded	Nutritional studies of range plants in Iceland.	Ólafsson G.	Íslenskar Landbúnaðar-rannsóknir	5	3-63	1973	2	published nat	ISL	http://www.landbunadur.is/landbunadur/wgsamvef.nsf/6d3d18e301de1f5e0025768c00561c33/c6f6986cab1e705f0025759800412b5c/\$FILE/%C3%8DSI.%20Landb%C3%BA.%20Nutritional%20studies%20of%20range%20plants%20in%20Iceland.pdf	no ecological impacts	sheep behaviour	
discarded	Sauðfjárrækt á Íslandi	Sigurðardóttir R.	Landbúnaðarháskóli Íslands			2013	R	book	ISL	National library	no ecological impacts	sheep behaviour	
discarded	Rannsóknir á plöntuvali sauðfjár. Áfangaskýrsla 1981	Þórhallsdóttir A.G.	Fjölrit RALA	84		1982	1	report	ISL	http://www.landbunadur.is/landbunadur/wgsamvef.nsf/6d3d18e301de1f5e0025768c00561c33/9739a3bcc655268f00257489003bce3f/\$FILE/Nr%2084.%20Ranns%C3%B3knir%20%C3%A1%20pl%C3%B6ntuvali%20sau%C3%B0fj%C3%A1r.%20F-Rala.pdf	no ecological impacts	sheep behaviour	
discarded	Fæðuval sauðfjár	Þórhallsdóttir A.G.	Freyr	85	533-536	1989	R	publication series	ISL	National library	no ecological impacts	sheep behaviour	
discarded	Behaviour and plant selection	Þórhallsdóttir A.G., Þorsteinsson I.	Icelandic Agricultural Sciences	7	59-77	1993	2	published intl	EN	http://www.landbunadur.is/landbunadur/wgsamvef.nsf/6d3d18e301de1f5e0025768c00561c33/1af5558159e05a5d00256e15004621f3/\$FILE/gr-bu7-agth.PDF	no ecological impacts	sheep behaviour	
discarded	Gróðurskilyrði, gróðurfur, uppskera gróðurlenda og plöntuval sauðfjár	Þorsteinsson I.	Íslenskar Landbúnaðar-rannsóknir	12	85-99	1981	R	published nat	ISL	National library	no ecological impacts	sheep behaviour	
discarded	Plöntuval sauðfjár.	Þorsteinsson I.	Freyr	60	194-201	1964	R	publication series	ISL	National library	no ecological impacts	sheep behaviour	
discarded	Plöntuval sauðfjár: rannsóknir á afréttalöndum	Þorsteinsson I.	Freyr	60	194-201	1964	R	publication series	ISL	National library	no ecological impacts	sheep behaviour	
discarded	Plöntuval sauðfjár og meltanleiki beitarplantna	Þorsteinsson I., Ólafsson G.	Freyr	10-11	157-163	1965	R	publication series	ISL	National library	no ecological impacts	sheep behaviour	

discarded	Fjárbeit í skóglendi og úthaga	Þorsteinsson I., Ólafsson G.	Ársrit skógræktarfélags Íslands		6-14	1967	R	publication series	ISL	http://www.skog.is/skjol/Rit1967/#/5/zoomed	no ecological impacts	sheep behaviour	
discarded	Some features of behaviour, selective grazing and interaction of sheep and horses.	Jónsdóttir S.	BSc thesis, University of Wales, Bangor			1988	R	thesis	EN	Private collection	no ecological impacts	sheep behaviour	
discarded	Foraging activity and sheep performance and its relevance for range management in Northern Iceland.	Jónsdóttir S.	MSc thesis, University of Wales, Bangor			1994	R	thesis	EN	Private collection	no ecological impacts	sheep behaviour	
discarded		Gestsson E., Eydal M.	Icelandic Agricultural Sciences	8	107-114	1994	1	published intl	ISL	http://www.landbunadur.is/landbunadur/wgsamvef.nsf/6d3d18e301de1f5e0025768c00561c33/7350ca2f9f858cab00256dff003d91c9/\$FILE/gr-bu8-eg.PDF	no ecological impacts	sheep health	
discarded	Ill-trift of suckling lambs on lowland pastures in Iceland. I. General characteristics and animal performance	Guðmundsson Ó.	Icelandic Agricultural Sciences	1	59-68	1988	2	published intl	EN	http://www.landbunadur.is/landbunadur/wgsamvef.nsf/6d3d18e301de1f5e0025768c00561c33/b6e07c9bf903a1ab400256f4a004e83b6/\$FILE/gr-buv1-og.PDF	no ecological impacts	sheep health	
discarded	Blood plasma levels of fluoride in Icelandic sheep	Kristinsson J., Gunnarsson E., Jóhannesson Þ., Pálsson P.A., Þormar H.	Icelandic Agricultural Sciences		81-85	1991	2	published intl	EN	http://www.landbunadur.is/landbunadur/wgsamvef.nsf/6d3d18e301de1f5e0025768c00561c33/cc0a48d88ca4d93d00256f39002fb60f/\$FILE/gr-bu5-jk.PDF	no ecological impacts	sheep health	
discarded	Aðskotaefnin kadmín, kvikasilfur og blý og næringarefnið járn, kopar, sink og mangan í lifur og nýrum íslenskra lamba	Reykdal Ó., Thorlacius A.	Fjölrit RALA	204	37-56	2000	1	report	ISL	http://www.landbunadur.is/landbunadur/wgsamvef.nsf/6d3d18e301de1f5e0025768c00561c33/b54f27ac931a0a2d00256d0600594f97/\$FILE/Snefilefni%20Lomb.pdf	no ecological impacts	sheep health	
discarded	Association of farming practice and the seasonal occurrence of gastrointestinal helminths in a flock of sheep in Iceland	Skírnisson K.	Icelandic Agricultural Sciences	24	43-54	2011	1	published intl	EN	http://www.landbunadur.is/landbunadur/wgsamvef.nsf/6d3d18e301de1f5e0025768c00561c33/28e114c0398eb55b00257945003c5ef0/\$FILE/Karl%20Sk%C3%ADrniss%202011%20IAS.pdf	no ecological impacts	sheep health	
discarded	Stocking rates for northern rangelands	Arnalds A., Rittenhouse L.R.	Grazing Research at Northern Latitudes (ed. Ólafur Guðmundsson).		335-348	1986	R	book	EN	National library	no ecological impacts	sheep production	
discarded	Effects of the timing of weaning lambs and transferring from rangeland grazing to forage rape and aftermath grazing, with respect to lamb growth and development	Bjarnadóttir Þ., Sveinbjörnsson J., Eyþórsdóttir E.,	Icelandic Agricultural Sciences	19	59-70	2006	2	published intl	EN	http://www.landbunadur.is/landbunadur/wgsamvef.nsf/6d3d18e301de1f5e0025768c00561c33/c31ad20e695ce19a00257216007acd47/\$FILE/Effect%20of%20the%20timing.pdf	no ecological impacts	sheep production	
discarded	The effect of different grazing pasture systems and spring turn-out date on growth and development of lambs	Bjarnadóttir Þ., Sveinbjörnsson J., Eyþórsdóttir E.,	Icelandic Agricultural Sciences	19	71-80	2006	2	published intl	EN	http://www.landbunadur.is/landbunadur/wgsamvef.nsf/6d3d18e301de1f5e0025768c00561c33/1fd15b53b0853d0000257216007c4e66/\$FILE/The%20effect%20of%20different.pdf	no ecological impacts	sheep production	
discarded	Effect of some environmental factors and stocking density on the performance of sheep, cattle and horses grazing drained bog pastures	Bjarnason V., Guðmundsson Ó.	Grazing Research at Northern Latitudes (ed. Ólafur Guðmundsson).		129-140	1986	R	book	EN	National library	no ecological impacts	sheep production	
discarded	Fóðurkál og áhrif þess á sláturlömb	Bláfeld S.	Íslenskar Landbúnaðar-rannsóknir	8	66-85	1976	R	publication series	ISL	http://www.landbunadur.is/landbunadur/wgsamvef.nsf/6d3d18e301de1f5e0025768c00561c33/364d1a1e72b52450002575980046d75f/\$FILE/%C3%8DS1.%20Landb%C3%BA.%20F%C3%B3%C3%B0urk%C3%A11%20og%20%C3%A1hrif%20%C3%BEess%20%C3%A1%20sl%C3%A1tur%C3%B6mb..pdf	no ecological impacts	sheep production	
discarded	North European short-tailed breeds of sheep: a review.	Dýrmondsson Ó.R., Niznikowski R.	Animal	4	1275-1282	2010	R	published intl	EN	https://www.ncbi.nlm.nih.gov/pubmed/22444647	no ecological impacts	sheep production	
discarded	Reproduction, growth and nutrition in sheep: Dr Halldór Pálsson memorial publication	Dýrmondsson Ó.R., Þorgeirsson S.	Agricultural Research Institute			1989	R	book	EN	National library	no ecological impacts	sheep production	
discarded	Fjárhirðing og heyöflun -vinna - vélar - útihús - kostnaður	Einarsson G., Sverrirsson G., Guðmundsson B.	Ráðunautafundur		13-24	1997	1	conference proceedings	ISL	http://www.landbunadur.is/landbunadur/wgsamvef.nsf/6d3d18e301de1f5e0025768c00561c33/566ef14f4d99057100256d320051b249?OpenDocument&Highlight=0,beit,sau%C3%B0f%C3%A9	no ecological impacts	sheep production	

discarded	Ræktun fôðurnæpu	Eiríksson J.	Ráðunautafundur		44-48	1991	1	conference proceedings	ISL	http://www.landbunadur.is/landbunadur/wgsamvef.nsf/6d3d18e301de1f5e0025768c00561c33/6617283a452d202300256b04003c1bf1?OpenDocument&Highlight=0,beit,sau%C3%B0f%C3%A9	no ecological impacts	sheep production	
discarded	Gæðamælingar á lambakjöti - erfða - og umhverfisáhrif	Eyþórsdóttir E., Sveinbjörnsson J.	Rit LBHÍ	14	71-82	2007	1	report	ISL	http://www.landbunadur.is/landbunadur/wgsamvef.nsf/6d3d18e301de1f5e0025768c00561c33/d3bdfa3b75adc0b0025744b005f6717/\$FILE/G%C3%A6%C3%B0am%C3%A6lingar%20%C3%A1%20lambakj%C3%B6ti...%20HG.pdf	no ecological impacts	sheep production	
discarded	Tilraunastarfið á Hesti 2001–2004. Eldi lamba og rekstrarlíkan í sauðfjárframleiðslu	Eyþórsdóttir E., Sveinbjörnsson J., Þorkelsson G.	Fræðaðing landbúnaðarins		116-124	2005	1	conference proceedings	ISL	http://www.landbunadur.is/landbunadur/wgsamvef.nsf/6d3d18e301de1f5e0025768c00561c33/aed13a8688e053e500256f9a0032a1fd/\$FILE/19.pdf	no ecological impacts	sheep production	
discarded	Erfðalindir í landbúnaði	Eyþórsdóttir E., Tómasson Þ., Helgadóttir A.	Ráðunautafundur		45-50	2001	1	conference proceedings	ISL	http://www.landbunadur.is/landbunadur/wgsamvef.nsf/6d3d18e301de1f5e0025768c00561c33/4393e53535ae345200256bc0082c831/\$FILE/svart-ee-ofl.pdf	no ecological impacts	sheep production	
discarded	Fróðleiksmolar um grænifóður	Geirsson Ó.	Handbók bænda	42		1992	1	publication series	ISL	http://www.landbunadur.is/landbunadur/wgsamvef.nsf/6d3d18e301de1f5e0025768c00561c33/338b08306ce3a5b600256b04003e84e8?OpenDocument	no ecological impacts	sheep production	
discarded	Beitartilraunin á Auðkúluheiði	Gíslason E.E.	Ráðunautafundur	4	359-374	1978	R	conference proceedings	ISL	National library	no ecological impacts	sheep production	
discarded	Beitartilraunir á Afrétti	Guðmundsson Ó.	Ráðunautafundur		31-74	1981	1	conference proceedings	ISL	http://www.landbunadur.is/landbunadur/wgsamvef.nsf/6d3d18e301de1f5e0025768c00561c33/49d6ee301a6040a8002572ff00396fe3/\$FILE/Beitartilraunir%20%C3%A1%20afr%C3%A9tti.%20Rad%201981.pdf	no ecological impacts	sheep production	
discarded	Influence of quantity and quality of forages on intake and production of grazing sheep	Guðmundsson Ó.	Icelandic Agricultural Sciences	7	79-91	1993	1	published intl	EN	http://www.landbunadur.is/landbunadur/wgsamvef.nsf/6d3d18e301de1f5e0025768c00561c33/570ae592498694bb00256e150049387f/\$FILE/gr-bu7-og.PDF	no ecological impacts	sheep production	
discarded	Sheep Grazing On Pastures And Rangelands In Iceland	Guðmundsson Ó.	Proceedings 3rd Circumpolar Agricultural Conference		87-95	1998	2	conference proceedings	EN	http://www.landbunadur.is/landbunadur/wgsamvef.nsf/6d3d18e301de1f5e0025768c00561c33/eafaf99f08148dbf00256bec00676520?OpenDocument&Highlight=0,grazing,sheep	no ecological impacts	sheep production	
discarded	Effect of grazing pressure and time of grazing on intake, digestibility and growth of sheep grazing subarctic summer rangeland	Guðmundsson Ó., Jónsdóttir S., Þórsson J.	8th World Conference on Animal Production		240-241	1998	2	conference proceedings	EN	http://www.landbunadur.is/landbunadur/wgsamvef.nsf/6d3d18e301de1f5e0025768c00561c33/8ec106ce2c16b65500256b43004c7eb8/\$FILE/Sheep%20grazing-WCAP-Absrt-98a.pdf	no ecological impacts	sheep production	
discarded	Haustbeit lamba á fôðurlúpinu.	Guðmundsson Ó., Runólfsson S., Ólafsson	Ráðunautafundur		30-38	1984	R	conference proceedings	ISL	National library	no ecological impacts	sheep production	
discarded	Fóðrun og beit	Guðmundsson Ó., Eyþórsdóttir E., Vagnsson Ó.G.	Ráðunautafundur		33-42	1997	1	conference proceedings	ISL	http://www.landbunadur.is/landbunadur/wgsamvef.nsf/6d3d18e301de1f5e0025768c00561c33/81c2581c8b34e08a00256c3000035154?OpenDocument&Highlight=0,beit,sau%C3%B0f%C3%A9	no ecological impacts	sheep production	
discarded	Næringarefni og orka í beitargróðri	Hlöðversson R.	Fjölrit Bændaskólans á Hvanneyri	4		1977	1	report	ISL	http://www.landbunadur.is/landbunadur/wgsamvef.nsf/6d3d18e301de1f5e0025768c00561c33/ff41ff218aebdc560025749e0049c6d8/\$FILE/22.%20N%C3%A6ringarefni%20og%20orka%20%C3%AD%20beitargr%C3%B3ri.%20B%C3%81H.pdf	no ecological impacts	sheep production	
discarded	The effects of low-voltage electrical stimulation and freezing on tenderisation, enzyme activities, drip losses and cooking losses of lamb	Ingólfsson R., Dransfield E.	Icelandic Agricultural Sciences	5	63-80	1991	2	published intl	EN	http://www.landbunadur.is/landbunadur/wgsamvef.nsf/6d3d18e301de1f5e0025768c00561c33/1bb5b464e8cab4b900256e1600467113/\$FILE/gr-bu5-ri.PDF	no ecological impacts	sheep production	
discarded	Úrval fyrir frjósemi og þunga lamba	Jónmundsson J.V.	Fjölrit Bændaskólans á Hvanneyri	2		1975	1	report	ISL	http://www.landbunadur.is/landbunadur/wgsamvef.nsf/6d3d18e301de1f5e0025768c00561c33/bb6bb0a10057f9400025749e0040b0a9/\$FILE/8.%20%C3%9Arval%20fyrir%20frj%C3%B3semi%20og%20%C3%BEunga%20lamba.%20B%C3%81H.pdf	no ecological impacts	sheep production	

discarded	Beit sauðfjár og kálfa á ræktað land	Jónmundsson J.V., Dýrmundsson Ó.R.	Ráðunautafundur		88-92	1981	1	conference proceedings	ISL	http://www.landbunadur.is/landbunadur/wgsamvef.nsf/6d3d18e301de1f5e0025768c00561c33/8d53c2935810c56c002572ff003b12e3/\$FILE/Beit%20sau%C3%B0fj%C3%A1r%20og%20k%C3%A1lfa%20%C3%A1%20r%C3%A6kta%C3%B0%20land.%20Rad%201981.pdf	no ecological impacts	sheep production	
discarded	Áhrif beitarþunga á arðsemi á Auðkúluheiði	Stefansson B.S.	Freyr	80	536-538	1984	R	publication series	ISL	National library	no ecological impacts	sheep production	
discarded	Beitartilraunir á Suðurlandi	Steinhorsson S.	Ráðunautafundur			1978	R	conference proceedings	ISL	National library	no ecological impacts	sheep production	
discarded	Comparison of a high-input vs low-input system for Icelandic sheep production	Sveinbjörnsson J., Einarsson G.	Icelandic Agricultural Sciences	12	3-13	1998	2	published intl	EN	http://www.landbunadur.is/landbunadur/wgsamvef.nsf/6d3d18e301de1f5e0025768c00561c33/f35d30376ac0058700256de20047808d?OpenDocument&Highlight=0,grazing,sheep	no ecological impacts	sheep production	
discarded	Tilraunaskýrsla 1998 - Skiptibeit með hross og sauðfé	Þórhallsdóttir A.G., Ólafsson H.B.	Rit Búvísindadeildar	24	48-52	1998	1	report	ISL	http://www.landbunadur.is/landbunadur/wgsamvef.nsf/6d3d18e301de1f5e0025768c00561c33/4a4c0066a3b6a2530025744c003476e4/\$FILE/Skiptibeit%20me%C3%B0%20hross%20og%20sau%C3%B0f%C3%A9%20R24.pdf	no ecological impacts	sheep production	
discarded	Skiptibeit með hross og sauðfé og áhrif ormalyfja og hnýslalyfja	Þórhallsdóttir A.G., Ólafsson H.B., Sigurdarson S.	Ráðunautafundur		322-325	2001	1	conference proceedings	ISL	http://www.landbunadur.is/landbunadur/wgsamvef.nsf/6d3d18e301de1f5e0025768c00561c33/ada7a1b5d101eeb400256c300002967a?OpenDocument&Highlight=0,beit,sau%C3%B0f%C3%A9	no ecological impacts	sheep production	
discarded	Gæði sauðfjárafurða	Þorkelsson G., Reykdal Ó.	Ráðunautafundur		232-239	2002	1	conference proceedings	ISL	http://www.landbunadur.is/landbunadur/wgsamvef.nsf/6d3d18e301de1f5e0025768c00561c33/69d8b69304aee69500256c3000	no ecological impacts	sheep production	
discarded	Beitartilraunin í Álfaveri	Thorsteinsson E.	Ráðunautafundur	4	375-385	1978	R	conference proceedings	ISL	National library	no ecological impacts	sheep production	
discarded	Beitargildi gróðurlenda	Þorsteinsson I.	Íslenskar Landbúnaðar- rannsóknir	12	123-125	1981	R	published nat	ISL	National library	no ecological impacts	sheep production	
discarded	Samanburður á afurðum þungra og léttra áa	Þorsteinsson S.S.	Íslenskar Landbúnaðar- rannsóknir		87-101	1969	1	published nat	ISL	http://www.landbunadur.is/landbunadur/wgsamvef.nsf/6d3d18e301de1f5e0025768c00561c33/abc27faff3d82e1c002575980037196b?OpenDocument&Highlight=0,beit,sau%C3%B0f%C3%A9	no ecological impacts	sheep production	
discarded	Áherslur í landgræðslurannsóknnum	Tómasson Þ.	Ráðunautafundur		97-101	1993	1	conference proceedings	ISL	http://www.landbunadur.is/landbunadur/wgsamvef.nsf/6d3d18e301de1f5e0025768c00561c33/0218923932a4bf3200256c4f0041b967?OpenDocument&Highlight=0,beit,sau%C3%B0f%C3%A9	no sheep		
discarded	Áhrif lúpínu á ræktun birkis	Aradóttir Á.L.	Ráðunautafundur		114-119	2000	1	conference proceedings	ISL	http://www.landbunadur.is/landbunadur/wgsamvef.nsf/6d3d18e301de1f5e0025768c00561c33/687cb582f5fded2400256c3000032393/\$FILE/ala.pdf	no sheep		
discarded	Carbon accumulation in vegetation and soils by reclamation of degraded areas	Aradóttir Á.L., Svavarsdóttir K., Jónsson Þ.H., Guðbergsson G.	Icelandic Agricultural Sciences	13	99-113	2000	2	published intl	EN	http://www.landbunadur.is/landbunadur/wgsamvef.nsf/6d3d18e301de1f5e0025768c00561c33/0244e6d7f65360da00256de2003e3043/\$FILE/gr-bu13-asa2.pdf	no sheep		
discarded	Approaches to landcare—a century of soil conservation in Iceland	Arnalds A.	Land Degradation & Development	16	113-125	2005	2	published intl	EN	http://onlinelibrary.wiley.com/doi/10.1002/ldr.665/pdf	no sheep		
discarded	Selen og jógurbólugusýklar hjá fyrsta kálfs kvígum	Arnþórsdóttir A.L.	Freyr	9	26-29	2002	1	publication series	ISL	http://www.landbunadur.is/landbunadur/wgsamvef.nsf/6d3d18e301de1f5e0025768c00561c33/3532f914792a0beb002572b50054d183/\$FILE/Selen%20og%20j%C3%BAgurb%C3%B3lgus%C3%BDklar%20h%C3%A1%20fyrsta%20k%C3%A1lfs%20kv%C3%ADgum.pdf	no sheep		
discarded	Endurreisn Hafnarskógar	Aspelund F.	Ráðunautafundur		101-103	2000	1	conference proceedings	ISL	http://www.landbunadur.is/landbunadur/wgsamvef.nsf/0/6388e6e3746d193200256c3000032399?OpenDocument	no sheep		

discarded	The World Grows Organic	Bjarnadóttir Á.H.	13th International IFOAM Scientific Conference Basel, Sviss			2000	1	conference proceedings	EN	http://www.landbunadur.is/landbunadur/wgsamvef.nsf/6d3d18e301de1f5e0025768c00561c33/a1aa15fe2b9db51f00256ced00482d58?OpenDocument&Highlight=0,beit,sau%C3%B0f%C3%A9	no sheep		
discarded	Exotics: a threat or a benefit. Opening remarks.	Dagfinnsson S.	Icelandic Agricultural Sciences	9	1995	1995	2	published intl	EN	http://www.landbunadur.is/landbunadur/wgsamvef.nsf/6d3d18e301de1f5e0025768c00561c33/c69f24d2afd4b64000256f3a002e7102/\$FILE/gr-bu9-sd.PDF	no sheep		
discarded	Gildi loftmynda í fornleifarannsóknunum	Davíðsdóttir L. L.	MSc thesis, University of Iceland			2011	2	thesis	ISL	http://skemman.is/en/item/view/1946/11136	no sheep		
discarded	Reyniviður er rausnartré	Davíðsson I.	Garðyrkjuritið	1	118-125	1980	1	publication series	ISL	http://www.landbunadur.is/landbunadur/wgsamvef.nsf/6d3d18e301de1f5e0025768c00561c33/5ca8918dfe5d5c32002577c4004db8f4/\$FILE/1980%20-%20Reynivi%C3%B0ur%20er%20rausnartr%C3%A9%20-%20Gar%C3%B0yrkjuriti%C3%B0.pdf	no sheep		
discarded	Beit nautgripa til kjötframleiðslu	Dýrmundsson Ó.R.	Handbók bænda	40	296	1990	1	publication series	ISL	http://landbunadur.is/landbunadur/wgsamvef.nsf/key2/index.html	no sheep		
discarded	Lífrænn landbúnaður - lífrænn áburður	Einarsdóttir Ó.B., Óskarsson M.	Ráðunautafundur		217-229	1995	1	conference proceedings	ISL	http://www.landbunadur.is/landbunadur/wgsamvef.nsf/6d3d18e301de1f5e0025768c00561c33/d33b0a22fd17b6a300256d9b004c2f6e?OpenDocument&Highlight=0,beit,sau%C3%B0f%C3%A9	no sheep		
discarded	Grasbítar á gróðri á hopunarsvæði Skaftafellsjökuls	Einarsdóttir S.G.	MSc thesis, University of Iceland			2010	2	thesis	ISL	http://skemman.is/en/item/view/1946/13260	no sheep		
discarded	Gróðurathuganir í Hallormsstaðaskógi, Vaglsaskógi og í Haukadal.	Einarsson E.	Ársrit skógrættarfélag Íslands		22-30	1959	R	publication series	ISL	http://www.skog.is/skjol/Rit1959/	no sheep		
discarded	Uppgræðslutilraun á Tungnaáröræfum	Fridriksson S.	Íslenskar Landbúnaðarannsóknir	1	38-44	1969	O	publication series	ISL	National library	no sheep		
discarded	Gróðurskemmdir í Fljótsdal 1996 og 1997	Guðleifsson B.E., Hallgrímur H., Lárusson Þ.	Ársrit skógrættarfélag Íslands		111-118	1997	R	publication series	ISL	http://www.skog.is/skjol/Rit1997/	no sheep		
discarded	Fóðrun og beit hrossa	Guðmundsson Ó.	Ráðunautafundur		73-81	1994	1	conference proceedings	ISL	http://www.landbunadur.is/landbunadur/wgsamvef.nsf/6d3d18e301de1f5e0025768c00561c33/a6aa38f3a38f1dca00256c300002966d?OpenDocument&Highlight=0,beit,sau%C3%B0f%C3%A9	no sheep		
discarded	Use of Alcanes as markers in fish nutrition	Guðmundsson Ó.	Workshop on Alkanes as markers in herbivore feeding studies			1995	2	conference proceedings	EN	http://www.landbunadur.is/landbunadur/wgsamvef.nsf/6d3d18e301de1f5e0025768c00561c33/020e1d0f145d485000256c3000018550/\$FILE/MLURI-Fundur-grein-95A.pdf	no sheep		
discarded	Evaluation of feeds for horses	Guðmundsson Ó.	Nova course on the Icelandic horse and horse breeding and management		1-30	1998	2	conference proceedings	EN	http://www.landbunadur.is/landbunadur/wgsamvef.nsf/6d3d18e301de1f5e0025768c00561c33/02ce66763b4e347b00256c3000029676/\$FILE/Evaluation%20of%20feeds%20for%20horses_.pdf	no sheep		
discarded	Breyting á orkumatskerfi fyrir jörturdýr	Guðmundsson Ó., Einarsson T.	Ráðunautafundur		39-45	1995	1	conference proceedings	ISL	http://www.landbunadur.is/landbunadur/wgsamvef.nsf/6d3d18e301de1f5e0025768c00561c33/6149e2f728dc23b100256c3000043651?OpenDocument&Highlight=0,beit,sau%C3%B0f%C3%A9	no sheep		
discarded	The use of N-alkanes as markers for determination of intake and digestibility of fish feed	Guðmundsson Ó., Halldórsdóttir K.	EIFAC Workshop on Methodology for Determination of Nutrient Requirements in Fish		24-30	1993	2	conference proceedings	EN	http://www.landbunadur.is/landbunadur/wgsamvef.nsf/6d3d18e301de1f5e0025768c00561c33/e3da5cf3aff24c2a00256c300001854f/\$FILE/The_use_of_.pdf	no sheep		
discarded	Gróðurathuganir sumurin 1974-1976	Gunnlaugsdóttir E.	Ráðunautafundur		72-76	1979	R	conference proceedings	ISL	National library	no sheep		
discarded	Composition and dynamical statur of heatland communities in Iceland in relation to recovery measurements	Gunnlaugsdóttir E.	PhD thesis, Uppsala University			1985	R	published intl	EN	https://www.diva-portal.org/smash/get/diva2:565458/FULLTEXT01.pdf	no sheep		

discarded	Meltanleikarannsóknir hjá bleikju	Haldórsdóttir K., Guðmundsson Ó.	Ráðunautafundur		284-294	1993	1	conference proceedings	ISL	http://www.landbunadur.is/landbunadur/wgsamvef.nsf/6d3d18e301de1f5e0025768c00561c33/b25cd8a09be6532300256bec00676494?OpenDocument&Highlight=0,beit,sau%C3%B0f%C3%A9	no sheep		
discarded	Hrossabeit í skógræktargirðingu	Haldórsdóttir S.A., Þórhallsdóttir A.G.	Fræðaðing landbúnaðarins		367-370	2004	1	conference proceedings	ISL	http://www.landbunadur.is/landbunadur/wgsamvef.nsf/6d3d18e301de1f5e0025768c00561c33/08b8f2fed3eb932700256e3c003cf31a?OpenDocument&Highlight=0,beit,sau%C3%B0f%C3%A9	no sheep		
discarded	Fóðrun og beit hrossa á þéttbýlissvæðum	Hilmarsdóttir B., Guðmundsson Ó.	Ráðunautafundur		170-180	1987	R	conference proceedings	ISL	http://www.landbunadur.is/landbunadur/wgsamvef.nsf/6d3d18e301de1f5e0025768c00561c33/5df5b5b4e35ceaea0025716f004bc6f7/\$FILE/1987-BH&OG.pdf	no sheep		
discarded	Tilraun með beit hrossa á mýrlendi	Hilmarsdóttir B., Guðmundsson Ó., Ríkharrósson, G.	Ráðunautafundur		1-11	1984	1	conference proceedings	ISL	http://www.landbunadur.is/landbunadur/wgsamvef.nsf/6d3d18e301de1f5e0025768c00561c33/8b558f27c62fde9900257188004eddc/\$FILE/1984-BH&OG&GR.pdf	no sheep		
discarded	Variable sensitivity of plant communities in Iceland to experimental warming	Jónsdóttir I.S.	Global Change Biology	11	553-563	2005	R	published intl	EN	http://onlinelibrary.wiley.com/doi/10.1111/j.1365-2486.2005.00928.x/abstract	no sheep		
discarded	Uppgræðslustörf bænda	Jónsdóttir S., Balvinsdóttir G.	Ráðunautafundur		89-92	2000	1	conference proceedings	ISL	http://www.landbunadur.is/landbunadur/wgsamvef.nsf/6d3d18e301de1f5e0025768c00561c33/46862eb714c86bab00256c4f00382e62/\$FILE/sj&gb.pdf	no sheep		
discarded	Heykögglar fyrir sláturlömb – niðurstöður tilrauna	Lárusson Þ., Sveinbjörnsson J.	Fræðaðing landbúnaðarins		253-260	2007	1	conference proceedings	ISL	http://www.landbunadur.is/landbunadur/wgsamvef.nsf/6d3d18e301de1f5e0025768c00561c33/5710593389e2a0bc002572bb0054dc27/\$FILE/07%20Heykogglar%20fyrir%20slaturlomb_nidurstodur%20tilrauna.pdf	no sheep		
discarded	Áhrif framræslu og beitar á gróðurfar, uppskeru og umhverfiþætti í mýri við Mjóavatn á Mosfellsheiði	Magnússon B.	Fjölrit RALA	127		1987	R	report	ISL	National library	no sheep		
discarded	Vöktun á ástandi og líffræðilegri fjölbreytni úthaga 2005.	Magnússon B., Magnússon S.H., Barkarson B.H., Guðleifsson B.E., Maronsson B.P., Starri Heiðmarsson S., Guðmundsson G.A., Jónsdóttir S.	Fræðaðing Landbúnaðarins		221-232	2006	R	conference proceedings	ISL	http://www.landbunadur.is/landbunadur/wgsamvef.nsf/0/edfa5984712715df0025710100497171/\$FILE/44.pdf	no sheep		
discarded	Selen og ormalyf handa kvígum	Ólafsson Þ., Bjarnadóttir S., Sigurðarson S., Jónsdóttir G.	Ráðunautafundur		200-203	1999	1	conference proceedings	ISL	http://www.landbunadur.is/landbunadur/wgsamvef.nsf/6d3d18e301de1f5e0025768c00561c33/f74f6782be7dabc400256c300004c664?OpenDocument&Highlight=0,beit,sau%C3%B0f%C3%A9	no sheep		
discarded	Túnrækt án tilbúins áburðar	Pálmason F.	Ráðunautafundur		230-243	1995	1	conference proceedings	ISL	http://www.landbunadur.is/landbunadur/wgsamvef.nsf/6d3d18e301de1f5e0025768c00561c33/e44542eda9960f0b00256c4f003f7329?OpenDocument&Highlight=0,beit,sau%C3%B0f%C3%A9	no sheep		
discarded	Hallormsstaður og Hallormsstaðaskógur : tutugu og fimm ára minningarit skógræktarinnar	Pálsson G.				1931	R	report	ISL	National library	no sheep		
discarded	Fóðurtegundir handa svínunum	Sigtryggsson P.	Fjölrit RALA	166		1993	1	report	ISL	http://www.landbunadur.is/landbunadur/wgsamvef.nsf/6d3d18e301de1f5e0025768c00561c33/0ce450cbbd6edb3100256cef0047ede0?OpenDocument&Highlight=0,beit,sau%C3%B0f%C3%A9	no sheep		
discarded	Ánamaðkar (Lumbricidae) í sunnlenskum túnunum	Sigurðardóttir H., Þorvaldsson G.	Icelandic Agricultural Sciences	8	9-20	1994	1	published intl	ISL	http://www.landbunadur.is/landbunadur/wgsamvef.nsf/6d3d18e301de1f5e0025768c00561c33/4d964b221fa315a500256da900517786/\$FILE/gr-bu8-hs&gth.PDF	no sheep		
discarded	Áhrif sinubruna á gróður og jarðvegshita	Snæbjörnsson Á.	Ráðunautafundur		147-152	1992	1	conference proceedings	ISL	http://www.landbunadur.is/landbunadur/wgsamvef.nsf/6d3d18e301de1f5e0025768c00561c33/ed7220197bf3783900256f23004eaabe?OpenDocument&Highlight=0,beit,sau%C3%B0f%C3%A9	no sheep		

discarded	Stefna í nautakjötsframleiðslu og kjötmat	Stefánsson Ó.E.	Ráðunautafundur		227-237	1988	1	conference proceedings	ISL	http://www.landbunadur.is/landbunadur/wgsamvef.nsf/6d3d18e301de1f5e0025768c00561c33/1556eb25c0f3c4c60025716b00508fd9/\$FILE/1988-OES.pdf	no sheep		
discarded	Mat á sláturhæfni nautgripa	Steindórsen G.	Ráðunautafundur		242-249	1996	1	conference proceedings	ISL	http://www.landbunadur.is/landbunadur/wgsamvef.nsf/6d3d18e301de1f5e0025768c00561c33/76a5e004aa8ddfed00256c300004364d?OpenDocument&Highlight=0,beit,sau%C3%B0f%C3%A9	no sheep		
discarded	Fögur er hlíðin - Fair is the blooming meadow	Þórhallsdóttir A.G.	Nordic Council of Ministers			2004	R	book	EN	http://www.keepeek.com/Digital-Asset-Management/occd/environment/fogur-er-hlidin-fair-is-the-blooming-meadow_tn2004-564#page154	no sheep		
discarded	Grazing - an ecological process	Þórhallsdóttir A.G.	Sustainable grazing in subarctic environments with regard to vegetation and soil processes (Editor: Olsen E.)		33-36	2014	R	conference proceedings	EN	http://www.bioforsk.no/ikbViewer/Content/122586/Olsen%20et%20al%202014_Workshop%20sustainable%20grazing.pdf	no sheep		
discarded	Náttúruvernd í dreifbýli	Þóroddsson Þ.F.	Ráðunautafundur		170-180	1992	1	conference proceedings	ISL	http://www.landbunadur.is/landbunadur/wgsamvef.nsf/6d3d18e301de1f5e0025768c00561c33/2f951309dbdaba8a00256e16004e990c?OpenDocument&Highlight=0,beit,sau%C3%B0f%C3%A9	no sheep		
discarded	Áhrif sinubruna, sláttar og samkeppni á endurvöxt klófifu í láglandismýri	Þorsteinsson B., Þórhallsdóttir A.G.	Fræðaðing landbúnaðarins		276-279	2004	1	conference proceedings	ISL	http://www.landbunadur.is/landbunadur/wgsamvef.nsf/6d3d18e301de1f5e0025768c00561c33/11491e6a413f384400256e3700453883?OpenDocument&Highlight=0,beit,sau%C3%B0f%C3%A9	no sheep		
discarded	Belgjurtir á Íslandi	Þorvaldsson G.	Ráðunautafundur		20-26	1993	1	conference proceedings	ISL	http://www.landbunadur.is/landbunadur/wgsamvef.nsf/6d3d18e301de1f5e0025768c00561c33/811b12689517b9ab00256c300001853c?OpenDocument&Highlight=0,beit,sau%C3%B0f%C3%A9	no sheep		
discarded	Slátturtími	Þorvaldsson G.	Bændablaðið	11	10	2003	1	newspaper	ISL	http://www.landbunadur.is/landbunadur/wgsamvef.nsf/6d3d18e301de1f5e0025768c00561c33/f5cea47651f4ea0f00256dc1004dd7e2?OpenDocument&Highlight=0,beit,sau%C3%B0f%C3%A9	no sheep		
discarded	Geographical variability in northern European sheep wool isotopic composition ($\delta^{13}C$, $\delta^{15}N$, δ^2H values)	Von Holstein I.C.C., Makarewicz C.A.	Rapid Communications in Mass Spectrometry	30	1423-1434	2016	1	published intl	EN	https://www.scopus.com/inward/record.uri?eid=2-s2.0-84969583333&partnerID=40&md5=4f8499c50df28d2e181ab53e56e56c7a	no sheep		
discarded	Treeline of mountain birch (<i>Betula pubescens</i> Ehrh.) in Iceland and its relationship to temperature	Wöll C.	MSc thesis, Agricultural University of Iceland			2008	2	thesis	EN	http://skemman.is/en/item/view/1946/7559	no sheep		
discarded	Skýrsla um rannsóknir á gróðri		Fjölrit RALA	40		1979	O	report	ISL	National library	no sheep		
discarded	Beit og plöntuval hrossa á framræstri mýri	Magnússon og Magnússon	Freyr	11	457-462	1991	R	publication series	ISL	National library	no sheep		
discarded	Rangelands - now and forever?	Alcock, Mike B.	Ráðunautafundur		8-27	1989	2	conference proceedings	EN	http://www.landbunadur.is/landbunadur/wgsamvef.nsf/6d3d18e301de1f5e0025768c00561c33/961281089c855d12002570bd004c899f/\$FILE/1989-Alcock.pdf	not Iceland		
discarded	Rangelands in Britain - the present situation and future developments	Alcock, Mike B.	Icelandic Agricultural Sciences	3	67-87	1990	1	published intl	EN	http://www.landbunadur.is/landbunadur/wgsamvef.nsf/6d3d18e301de1f5e0025768c00561c33/efefcb1f99e6092700256f56004cae27/\$FILE/gr-buv3-mba.PDF	not Iceland		
discarded	Plant response to defoliation: Hierarchical Considerations	Archer S., Tiesen L.	Grazing Research at Northern Latitudes (ed. Ólafur Guðmundsson).		45-62	1986	R	book	EN	National library	not Iceland		
discarded	Nutritive value of pastures and rangelands	Armstrong R.H., Milne J.A.	Icelandic Agricultural Sciences	7	37-43	1993	2	published intl	EN	http://www.landbunadur.is/landbunadur/wgsamvef.nsf/6d3d18e301de1f5e0025768c00561c33/e1d62ead8a3bd2af00256e15004bd6e0/\$FILE/gr-bu7-rha.PDF	not Iceland		
discarded	Influence of grazing on plant succession of rangelands	Ellison L.	Botanical Review	26	1-78	1960	O	published intl	EN	http://link.springer.com/article/10.1007/BF02860480	not Iceland		

discarded	Quality products from a quality landscape	Fothergill M., Davis D.A.	Ráðunautafundur		15-23	2001	2	conference proceedings	EN	http://www.landbunadur.is/landbunadur/wgsamvef.nsf/6d3d18e301de1f5e0025768c00561c33/e489c94abc3c50800256c4f003eed2d?OpenDocument&HighLight=0,grazing,sheep	not Iceland		
discarded	Ræktunarránsóknir á Suður-Grænlandi 1977-1981. A summary of a few practical observations - Agronomic studies in South-Greenland 1977-1981. A summary of a few practical observations	Jóhannesson B., Edge K., Thorsteinsson T.	Íslenskar Landbúnaðarránsóknir	17	57-71	1985	2	publication series	ISL	http://www.landbunadur.is/landbunadur/wgsamvef.nsf/6d3d18e301de1f5e0025768c00561c33/a6e3aafe9b9151550025768f0044ea05/\$FILE/%C3%8DSI.%20Landb%C3%BA.%20Agronomic%20Studies%20in%20South-Greenland%201977-1981....pdf	not Iceland		
discarded	Íslenskt sauðfé í Norður-Ameríku	Jóhannesson G., Lárusdóttir F.Ó.	Ráðunautafundur		221-225	2002	1	conference proceedings	ISL	http://www.landbunadur.is/landbunadur/wgsamvef.nsf/6d3d18e301de1f5e0025768c00561c33/72b5385004ab1b4700256c300004c65e?OpenDocument&HighLight=0,beit,sau%C3%B0f%C3%A9	not Iceland		
discarded	Food aversion learning in lambs with and without a mother: Discrimination, novelty and persistence	Þórhallsdóttir A.G., Provenza F.D., Balph D.F.	Applied Animal Behaviour Science	18	327-340	1987	R	published intl	EN	http://www.sciencedirect.com/science/article/pii/0168159187902267	not Iceland		
discarded	The role of the mother in the intake of harmful foods by lambs	Þórhallsdóttir A.G., Provenza F.D., Balph D.F.	Applied Animal Behaviour Science	25	35-44	1990	R	published intl	EN	http://www.sciencedirect.com/science/article/pii/016815919090067N	not Iceland		
discarded	Ability of lambs to learn about novel foods while observing or participating with social models	Þórhallsdóttir A.G., Provenza F.D., Balph D.F.	Applied Animal Behaviour Science	25	25-33	1990	R	published intl	EN	http://www.sciencedirect.com/science/article/pii/016815919090066M	not Iceland		
discarded	Social influences on conditioned food aversions in sheep	Þórhallsdóttir A.G., Provenza F.D., Balph D.F.	Applied Animal Behaviour Science	25	45-50	1990	R	published intl	EN	http://www.sciencedirect.com/science/article/pii/016815919090068O	not Iceland		
discarded	Landbúnaður á Grænlandi	Þorvaldsson G.	Freyr	21	775-777, 809	1994	1	publication series	ISL	http://www.landbunadur.is/landbunadur/wgsamvef.nsf/6d3d18e301de1f5e0025768c00561c33/84e8a53ff19d4e2e00256daa00308d76?OpenDocument&HighLight=0,beit,sau%C3%B0f%C3%A9	not Iceland		
discarded	Túnækt og viðhald ræktunar	Bragason Á.B.	Ráðunautafundur		192-196	2002	1	conference proceedings	ISL	http://www.landbunadur.is/landbunadur/wgsamvef.nsf/6d3d18e301de1f5e0025768c00561c33/0cedcd25a1578254100256c5f0076c389?OpenDocument&HighLight=0,beit,sau%C3%B0f%C3%A9	not rangeland		
discarded	Túnbeitartilraunir með sauðfé og kálfa á Hvanneyri sumurin 1975–1979	Dýrmundsson Ó.R.	Icelandic Agricultural Sciences	10	219-240	1996	1	published intl	ISL	http://www.landbunadur.is/landbunadur/wgsamvef.nsf/6d3d18e301de1f5e0025768c00561c33/27f80c72a57aad5b00256dea00401d5c/\$FILE/gr-bu10-ord.PDF	not rangeland		
discarded	Beitartilraun með tvílembur	Fridriksson S.	Árbók landbúnaðarins	11	8-35	1963	O	publication series	ISL	National library	not rangeland		
discarded		Geirsson Ó.	Ráðunautafundur		121-126	1981	1	conference proceedings	ISL	http://www.landbunadur.is/landbunadur/wgsamvef.nsf/6d3d18e301de1f5e0025768c00561c33/0246ddf35def261002573000052b6de/\$FILE/Me%C3%B0fer%C3%B0%20t%C3%BA.%20Rad%201981.pdf	not rangeland		
discarded	Beitarstjórnun á ræktuðu landi	Guðmundsson Ó.	Ráðunautafundur		49-60	1991	1	conference proceedings	ISL	http://www.landbunadur.is/landbunadur/wgsamvef.nsf/6d3d18e301de1f5e0025768c00561c33/b849a0ea798a9f0700256b04003c1133?OpenDocument&HighLight=0,beit,sau%C3%B0f%C3%A9	not rangeland		
discarded	Hautbeit slátturlamba	Guðmundsson Ó., Dýrmundsson Ó.R.	Búnaðarrit	96	424-435	1983	R	publication series	ISL	http://timarit.is/view_page_init.jsp?pageId=5034385	not rangeland		
discarded	Jarðræktartilraunir 1978	Gunnarsson T.	Fjölrit RALA		45		O	unsuitable document type	ISL	http://www.landbunadur.is/landbunadur/wgsamvef.nsf/6d3d18e301de1f5e0025768c00561c33/3691259b00121b1000257497005a8d6d/\$FILE/Nr%2045.%20Jar%C3%B0r%C3%A6ktartilraunir%201978.%20F-Rala.pdf	not rangeland		

discarded	Notkun á uppskerumæli	Jónmundsson J.V.	Fjölrit Bændaskólans á Hvanneyri	1		1974	1	report	ISL	http://www.landbunadur.is/landbunadur/wgsamvef.nsf/6d3d18e301de1f5e0025768c00561c33/b0fe7910d763ef720025749e003c8adf/\$FILE/1.%20Notkun%20%C3%A1%20uppskerum%C3%A6li.%20BF1.pdf	not rangeland		
discarded	Beitartilraunir 1979	Jónmundsson J.V.	Tilraunaskýrsla Bændaskólans á Hvanneyri	32	41-44	1980	R	report	ISL	http://www.landbunadur.is/landbunadur/wgsamvef.nsf/6d3d18e301de1f5e0025768c00561c33/f8f524e8fd91775f0025749e004d0918/\$FILE/29.%20Tilraunask%C3%BDrsla%201978%20B%C3%81H.pdf	Not rangeland		
discarded	Skýrsla um beitartilraunir 1914-1925	Jónsson Ó.	Ársrit Ræktunarfélags Norðurlands	27	25-29	1930	R	publication series	ISL	http://timarit.is/view_page_init.jsp?issId=229300&lang=i	not rangeland		
discarded	Hagbætur á framræstri múri	Óskarsson M., Sigurðsson G.	Fjölrit Bændaskólans á Hvanneyri	35		1981	1	report	ISL	http://www.landbunadur.is/landbunadur/wgsamvef.nsf/6d3d18e301de1f5e0025768c00561c33/3585455bb0f641800025749e005035f3/\$FILE/35.%20Hagab%C3%A6tur%20%C3%A1%20framr%C3%A6stri%20m%C3%BDri.%20B%C3%81H.pdf	not rangeland		
discarded	Tilraunir með sauðfjárbeit á framræstu múrlendi	Pálsson H.	Freyr	53	158-160	1957	R	publication series	ISL	National library	not rangeland		
discarded	Hautbeit sauðfjár	Pálsson H., Guðmundsson Ó., Þorsteinsson S.Sch.	Ráðunautafundur		106-120	1981	1	conference proceedings	ISL	http://www.landbunadur.is/landbunadur/wgsamvef.nsf/6d3d18e301de1f5e0025768c00561c33/2d25b41e1085565f002572ff004045f1/\$FILE/Hautbeit%20sau%C3%B0fj%C3%A1r.%20Rad%201981.pdf	not rangeland		
discarded	Bötun sláturlamba á ræktuðu landi	Pálsson H., Gunnarsson P.	Atvinnudeild Háskólans - Rit Landbúnaðardeildar : B-flokkur	15		1961	R	report	ISL	National library	not rangeland		
discarded	Fóðrun sláturlamba á ræktuðu landi	Pálsson H., Sveinsson R.	Atvinnudeild Háskólans - Rit Landbúnaðardeildar: A-flokkur	5		1952	R	report	ISL	National library	not rangeland		
discarded	Áhrif sníkjudýra á vöxt og þrif kálfa og kindu á þröngri láglendisbeit á Hvanneyri	Richter S.H., Eydal M., Símonarson B., Þorsteinsson Þ., Eiríksdóttir G.	Ráðunautafundur		93-100	1981	1	conference proceedings	ISL	http://www.landbunadur.is/landbunadur/wgsamvef.nsf/6d3d18e301de1f5e0025768c00561c33/8c99abb0c62deef0002572ff003c1061/\$FILE/%C3%81hrif%20sn%C3%ADkjud%C3%BDra%20%C3%A1%20v%C3%B6xt%20og%20%C3%BEri%20k%C3%A1lla...%20Rad%201981.pdf	not rangeland		
discarded	Sníkjudýr og hautbeit lamba á há	Richter S.H., Eydal M., Símonarson B., Þorsteinsson Þ., Eiríksdóttir G.	Íslenskar Landbúnaðar-rannsóknir	15	29-40	1983	1	published nat	ISL	http://keldur.is/sites/keldur.is/files/richter1983isllandbun.pdf	not rangeland		
discarded	Búfjárefirlit og sjúkdómavarnir	Runólfsson H.	Ráðunautafundur		68-69	2000	1	conference proceedings	ISL	http://www.landbunadur.is/landbunadur/wgsamvef.nsf/6d3d18e301de1f5e0025768c00561c33/8b0953db8b9bb65600256c3000018544?OpenDocument&Highlight=0,beit,sau%C3%B0fj%C3%A9	not rangeland		
discarded	Samanburður á fôðrunaræðferðum fyrir sauðfé	Sveinbjörnsson J.	Ráðunautafundur		157-167	1996	1	conference proceedings	ISL	http://www.landbunadur.is/landbunadur/wgsamvef.nsf/6d3d18e301de1f5e0025768c00561c33/eed0bc3143ab373600256c3000035158?OpenDocument&Highlight=0,beit,sau%C3%B0fj%C3%A9	not rangeland		
discarded	Atvinnuvegur á krossgötum. Staða búgreina á breyttum tímum	Þorgeirsson S., Bjarnadóttir E., Sveinsson Þ.E.	Fræðaðing landbúnaðarins		61-73	2004	1	conference proceedings	ISL	http://www.landbunadur.is/landbunadur/wgsamvef.nsf/6d3d18e301de1f5e0025768c00561c33/2204d0250165d57a00256e2f00565044/\$FILE/04-e-STH&EB&THES.PDF	not rangeland		
discarded	Tilraunaskýrsla - Meltanleikatilraun með hross og sauði	Þórhallsdóttir A.G.	Rit Búvísindadeildar	5	52-54	1994	1	report	ISL	http://www.landbunadur.is/landbunadur/wgsamvef.nsf/6d3d18e301de1f5e0025768c00561c33/7c35530280aad59a002574510032a827/\$FILE/Meltanleikatilraun%20me%C3%B0%20hross%20og%20sau%C3%B0i.%20R5.pdf	not rangeland		

discarded	Tilraunaskýrsla 1997 - Skiptibeitartilraun með hross og sauðfé	Þórhallsdóttir A.G.	Rit Búvísindadeildar	7	25-27	1997	1	report	ISL	http://www.landbunadur.is/landbunadur/wgsamvef.nsf/6d3d18e301de1f5e0025768c00561c33/c71d9dc9b538214e0025744c0041def2/\$FILE/Skiptibeitartilraun%20me%C3%B0%20hross%20og%20sau%C3%B0%C3%A9.%20R22.pdf	Not rangeland		
discarded	Fóðrun á alaskalúpínu	Þórssón J., Guðmundsson Ó.	Ráðunautafundur		295-306	1993	1	conference proceedings	ISL	http://www.landbunadur.is/landbunadur/wgsamvef.nsf/6d3d18e301de1f5e0025768c00561c33/98b18ef17a52aaa800256f2a00317681?OpenDocument&HighLight=0,beit,sau%C3%B0%C3%A9	not rangeland		
discarded	Samstarf milli Íslands, Færeyja og Grænlands í landbúnaðarrannsóknnum	Þorvaldsson G.	Ráðunautafundur		315-318	2000	1	conference proceedings	ISL	http://www.landbunadur.is/landbunadur/wgsamvef.nsf/6d3d18e301de1f5e0025768c00561c33/c3b5c888d810540b00256c3000018542?OpenDocument&HighLight=0,beit,sau%C3%B0%C3%A9	not rangeland		
discarded	Endurvöxtur Carex nigra, Carex panicea og Eriophorum angustifolium á láglandismýri	Þorsteinsson B., Þórhallsdóttir A.G.	Ráðunautafundur		315-317	2001	1	conference proceedings	ISL	http://www.landbunadur.is/landbunadur/wgsamvef.nsf/6d3d18e301de1f5e0025768c00561c33/afae5532d5dd3c2e00256c5f0078a790?OpenDocument&HighLight=0,beit,sau%C3%B0%C3%A9	not rangeland		
excluded	Frá utanlandsferðum 1977 – 1979. Ráðstefnur og rannsóknir	Aðalsteinsson, Stefán	Fjölrit RALA	53		1979	1	report	ISL	http://www.landbunadur.is/landbunadur/wgsamvef.nsf/6d3d18e301de1f5e0025768c00561c33/09c631d6551a001100257497005fcd89?OpenDocument&HighLight=0,beit,sau%C3%B0%C3%A9	unsuitable document type		
excluded	Ársskýrsla um rannsóknir á gróðri 1961	Atvinnudeild Háskólans, búnaðardeild	Freyr	59	42-51	1961	O	publication series	ISL	National library	unsuitable document type		
excluded	Rannsóknaverkefni 1990	Björnsson H.	Fjölrit RALA	146		1990	1	report	ISL	http://www.landbunadur.is/landbunadur/wgsamvef.nsf/6d3d18e301de1f5e0025768c00561c33/7303544b157b4eaf00257495002f9207/\$FILE/Nr%20146.%20Ranns%C3%B3knaverkefni%201990.%20F-Rala.pdf	unsuitable document type		
excluded	Tilraunaskýrsla 1998 Bændaskólans á Hvanneyri	Brynjólfsson R., Jónsdóttir R.H.	Rit Búvísindadeildar	24		1998	1	report	ISL	http://www.landbunadur.is/landbunadur/wgsamvef.nsf/6d3d18e301de1f5e0025768c00561c33/0c836f25f250cf930025744c0035826d/\$FILE/Rit%20B%C3%BAv%C3%ADsindadeildar.%20Tilraunask%C3%BDrsla%20B%C3%A6ndask%C3%B3lans%20%C3%A1%20Hvanneyri%201998..pdf	unsuitable document type		
excluded	Tilraunaskýrsla 1975 / Bændaskólinn á Hvanneyri	Dýrmondsson Ó.R.	Bændaskólinn á Hvanneyri. Fjölrit.	11		1975	R	report	ISL	National library	unsuitable document type		
excluded	Tilraunaskýrsla 1975 / Bændaskólinn á Hvanneyri	Dýrmondsson Ó.R.	Bændaskólinn á Hvanneyri. Fjölrit.	16		1976	R	report	ISL	National library	unsuitable document type		
excluded	Rannsóknaverkefni 1985	Eyþórsdóttir E.	Fjölrit RALA	109		1985	1	report	ISL	http://www.landbunadur.is/landbunadur/wgsamvef.nsf/6d3d18e301de1f5e0025768c00561c33/32c6fdea45ec9c0025748e00440df2/\$FILE/Nr%20109.%20Ranns%C3%B3knaverkefni%201985.%20F-Rala.pdf	unsuitable document type		
excluded	Rannsóknaverkefni 1986	Eyþórsdóttir E.	Fjölrit RALA	119		1986	1	report	ISL	http://www.landbunadur.is/landbunadur/wgsamvef.nsf/6d3d18e301de1f5e0025768c00561c33/5c5c304f5a7e6edb0025748e0048daed?OpenDocument&HighLight=0,beit,sau%C3%B0%C3%A9	unsuitable document type		
excluded	Tilraunalýsingar og vinnuáætlun fyrir beitartilraunir gerðar á vegum Rala sumarið 1983	Guðmundsson Ó.	Fjölrit RALA	101		1983	1	report	ISL	http://www.landbunadur.is/landbunadur/wgsamvef.nsf/6d3d18e301de1f5e0025768c00561c33/24fa54f2b71299c0025748e00354c8f/\$FILE/Nr%20101.%20Tilraunal%C3%BDsingar%20og%20vinnu%C3%A1%C3%A6tlun...%20F-Rala.pdf	unsuitable document type		

excluded	Ársskýrsla Rannsóknastofnunar landbúnaðarins 1979	Gunnarsson T.	Fjölrít RALA	65		1980	1	report	ISL	http://www.landbunadur.is/landbunadur/wgsamvef.nsf/6d3d18e301de1f5e0025768c00561c33/5e1e02e0984b6e3d00257486003cfac0/\$FILE/Nr%2065.%20%C3%81rskk%C3%BDrsla%20Ranns%C3%B3knastofnunar%20landb%C3%BAna%C3%B0arins%201979.%20F-Rala.pdf	unsuitable document type		
excluded	Tilraunaplön og vinnuáætlun fyrir landnýtingarverkefnið sumarið 1979	Gunnarsson T.	Fjölrít RALA	47		1979	1	report	ISL	http://www.landbunadur.is/landbunadur/wgsamvef.nsf/6d3d18e301de1f5e0025768c00561c33/48b4f32698cf3e9e00257497005bcdf?OpenDocument&HighLight=0,beit,sau%C3%B0f%C3%A9	unsuitable document type		
excluded	Ritskrá dr. Sturlu Friðrikssonar	Gunnarsson T.	Icelandic Agricultural Sciences		9-19	1996	2	published intl	ISL	http://www.landbunadur.is/landbunadur/wgsamvef.nsf/6d3d18e301de1f5e0025768c00561c33/832140b64a8793e700256b04004010ac?OpenDocument&HighLight=0,grazing,sheep	unsuitable document type		
excluded	Beitartilraunimar 1978	Jónmundsson J.V.	Tilraunaskýrsla Bændaskólans á Hvanneyri	29		1979	R	report	ISL	http://www.landbunadur.is/landbunadur/wgsamvef.nsf/6d3d18e301de1f5e0025768c00561c33/1ef177976ed921d30025749e0046ded0/\$FILE/16.%20Tilraunask%C3%BDrsla%201976.%20B%C3%81H.pdf	unsuitable document type		
excluded	Samstarfsnefnd um Landgræðsluáætlun (1980). Landgræðsluáætlun 1981-1985. Álit samstarfsnefndar um. landgræðsluáætlun. 83 bls., Landbúnaðarráðuneyti.	Jónmundsson, Jón Viðar...	Landgræðsluáætlun 1981-1985			1985	R	report	ISL	National library	unsuitable document type		
excluded	Skrá um rannsóknir í landbúnaði 1965 – 1985 - Fjölrít Rala	Jónsson G.	Fjölrít RALA	184		1996	1	report	ISL	http://www.landbunadur.is/landbunadur/wgsamvef.nsf/6d3d18e301de1f5e0025768c00561c33/751a7a6a9deee790002574950041d864/\$FILE/Nr%20184.%20Skr%C3%A1%20um%20ranns%C3%B3knir%20%C3%AD%20land%20b%C3%BAna%C3%B0i%201965-1985.%20F-Rala.pdf	unsuitable document type		
excluded	Ársskýrsla Rannsóknastofnunar landbúnaðarins 1981	Ólafsson G.	Fjölrít RALA	86		1981	1	report	ISL	http://www.landbunadur.is/landbunadur/wgsamvef.nsf/6d3d18e301de1f5e0025768c00561c33/b22ea2a039e57f6300257489003ca95f/\$FILE/Nr%2086.%20%C3%81rskk%C3%BDrsla%20Ranns%C3%B3knastofnunar%20landb%C3%BAna%C3%B0arins%201981.%20F-Rala.pdf	unsuitable document type		
excluded	Rannsóknaverkefni 1984	Ólafsson G.	Fjölrít RALA	107		1984	1	report	ISL	http://www.landbunadur.is/landbunadur/wgsamvef.nsf/6d3d18e301de1f5e0025768c00561c33/687cb55b641de7130025748e003d1f61/\$FILE/Nr%20107.%20Ranns%C3%B3knaverkefni%201984.%20F-Rala.pdf	unsuitable document type		
excluded	Bibliography of Dr Gunnar Ólafsson	Pálsdóttir G.	Icelandic Agricultural Sciences	7	7-9	1991	2	published intl	EN	http://www.landbunadur.is/landbunadur/wgsamvef.nsf/6d3d18e301de1f5e0025768c00561c33/de755b5fdfb331cc00256dff004747ef?OpenDocument&HighLight=0,rangeland,grazing,sheep	unsuitable document type		
excluded	Skýrsla um starfsemi Rannsóknastofnunar landbúnaðarins 1988 – 1989	Pálsdóttir G., Helgadóttir A.	Fjölrít RALA	143		1990	1	report	ISL	http://www.landbunadur.is/landbunadur/wgsamvef.nsf/6d3d18e301de1f5e0025768c00561c33/32d5b841a21b87ae00257490004bab30/\$FILE/Nr%20143.%20Sk%C3%BDrsla%20um%20starfsemi%20Rala%201988-1989.%20F-Rala.pdf	unsuitable document type		
excluded	Skýrslur um störf Búnaðarfélags Íslands 1975	Pálsson H.	Búnaðarrit	89		1976	O	report	ISL	National library	unsuitable document type		
excluded	Skýrslur um störf Búnaðarfélags Íslands 1976	Pálsson H.	Búnaðarrit	90		1977	O	report	ISL	National library	unsuitable document type		
excluded	Skýrslur um störf Búnaðarfélags Íslands 1977	Pálsson H.	Búnaðarrit	91		1978	O	report	ISL	National library	unsuitable document type		

excluded	Skýrslur um störf Búnaðarfélags Íslands 1978	Pálsson H.	Búnaðarrit	92		1979	O	report	ISL	National library	unsuitable document type		
excluded	Skýrslur um störf Búnaðarfélags Íslands 1979	Pálsson H.	Búnaðarrit	93		1980	O	report	ISL	National library	unsuitable document type		
excluded	Dr Gunnar Ólafsson (1934–1985) In memoriam	Sigurbjörnsson B.	Icelandic Agricultural Sciences	7	5-6	1993	2	published intl	EN	http://www.landbunadur.is/landbunadur/wgsamvef.nsf/6d3d18e301de1f5e0025768c00561c33/6be265591dd2646900256dff00464b87?OpenDocument&Highlight=0,grazing,sheep	unsuitable document type		
excluded		Þorvaldsdóttir E. (editor)	Rit Búvísindadeildar	12		1996	1	report	ISL	http://www.landbunadur.is/landbunadur/wgsamvef.nsf/6d3d18e301de1f5e0025768c00561c33/812c69e1a3686b2e0025744f004f0c84/\$FILE/Rit%20B%C3%BAv%C3%ADsindadeildar.%20NR.%2012%20.Tilraunask%C3%BDrsla.pdf	unsuitable document type		
excluded	Gerum gott bú betra - Námskeið í gerð landnýtingaráætla	Valsdóttir E.H., Grímsdóttir H., Örnólfsson E.G.	Ráðunautafundur		32-38	2003	1	Other	ISL	http://www.landbunadur.is/landbunadur/wgsamvef.nsf/6d3d18e301de1f5e0025768c00561c33/0a0afe1d6ef0fda700256cc4005a8437?OpenDocument&Highlight=0,beit,sau%C3%B0f%C3%A9	unsuitable document type		
excluded	Ársskýrsla RALA 1974-1975		Fjölrit RALA	10		1976	O	report	ISL	National library	unsuitable document type		
excluded	Ársskýrsla rannsóknastofnunar landbúnaðarins 1977		Fjölrit RALA	33		1977	1	report	ISL	http://www.landbunadur.is/landbunadur/wgsamvef.nsf/6d3d18e301de1f5e0025768c00561c33/cf4c2014e8534f4900257497005a18b0?OpenDocument&Highlight=0,beit,sau%C3%B0f%C3%A9	unsuitable document type		
excluded	Ársskýrsla rannsóknastofnunar landbúnaðarins 1976		Fjölrit RALA	18		1977	O	report	ISL	National library	unsuitable document type		
excluded	Rannsóknaverkefni 1977		Fjölrit RALA	15		1977	O	report	ISL	National library	unsuitable document type		
excluded	Rannsóknaverkefni 1979		Fjölrit RALA	52		1979	1	report	ISL	http://www.landbunadur.is/landbunadur/wgsamvef.nsf/6d3d18e301de1f5e0025768c00561c33/ce99c4e11c23672f00257497005f2b73?OpenDocument&Highlight=0,beit,sau%C3%B0f%C3%A9	unsuitable document type		
excluded	Skrá um jarðræktartilraunir 1979		Fjölrit RALA	46		1979	O	report	ISL	National library	unsuitable document type		
excluded	Ársskýrsla rannsóknastofnunar landbúnaðarins 1978		Fjölrit RALA	48		1979	O	report	ISL	National library	unsuitable document type		
excluded	Tilraunaskýrsla 1979		Fjölrit Bændaskólans á Hvanneyri	323		1980	1	report	ISL	http://www.landbunadur.is/landbunadur/wgsamvef.nsf/6d3d18e301de1f5e0025768c00561c33/f522261b44c8e7aa0025749e004eda73?OpenDocument&Highlight=0,beit,sau%C3%B0f%C3%A9	unsuitable document type		
excluded	Tilraunaplön og vinnuáætlun fyrir landnýtingarverkefnið sumarið 1981		Fjölrit RALA	75		1981	O	report	ISL	National library	unsuitable document type		
excluded	Tilraunalýsingar og vinnuáætlun fyrir beitartilraunir gerðar sumarið 1982 og kostaðar eru af landgræðslu og landverndaráætlun 1982-1986		Fjölrit RALA	87		1982	O	report	ISL	National library	unsuitable document type		
excluded	Rannsóknaverkefni 1983		Fjölrit RALA	102		1983	1	report	ISL	http://www.landbunadur.is/landbunadur/wgsamvef.nsf/6d3d18e301de1f5e0025768c00561c33/49145e912f580e650025748e0035a17d?OpenDocument&Highlight=0,beit,sau%C3%B0f%C3%A9	unsuitable document type		
excluded	Búvísindi 10 - 1996. Efnisyfirlit		Icelandic Agricultural Sciences	10		1996	2	published intl	ISL	http://www.landbunadur.is/landbunadur/wgsamvef.nsf/6d3d18e301de1f5e0025768c00561c33/a778be3188f6d1db00256b47007f4d06?OpenDocument&Highlight=0,grazing,sheep	unsuitable document type		

excluded	IAS - 19 - 2006 - Contents		Icelandic Agricultural Sciences	19		2006	2	published intl	EN	http://www.landbunadur.is/landbunadur/wgsamvef.nsf/6d3d18e301de1f5e0025768c00561c33/81b26b4ec33bdb96002572f400346f8e?OpenDocument&Highlight=0,grazing,sheep	unsuitable document type		
excluded	Handbók bænda - Upplýsingar um fôðrun og beit búfjár í eldri árgöngum		Handbók bænda			1970	1	report	ISL	http://www.landbunadur.is/landbunadur/wgsamvef.nsf/6d3d18e301de1f5e0025768c00561c33/f107de4d617340dc00256b04003eeb51?OpenDocument&Highlight=0,beit,sau%C3%B0f%C3%A9	unsuitable document type		
excluded	Ráðunautafundur - Sauðfjárráðstefna 1971		Ráðunautafundur			1971	1	conference proceedings	ISL	http://www.landbunadur.is/landbunadur/wgsamvef.nsf/6d3d18e301de1f5e0025768c00561c33/9effcc584f86181a00257322005c109c?OpenDocument&Highlight=0,beit,sau%C3%B0f%C3%A9	unsuitable document type		
excluded	Ráðunautafundur - Búnaðarhagfræði 1973		Ráðunautafundur			1973	1	conference proceedings	ISL	http://www.landbunadur.is/landbunadur/wgsamvef.nsf/6d3d18e301de1f5e0025768c00561c33/9742b0b5bdf90de400257322005b4925?OpenDocument&Highlight=0,beit,sau%C3%B0f%C3%A9	unsuitable document type		
excluded	Ráðunautafundur - Jarðræktarráðstefna 1974		Ráðunautafundur			1974	1	conference proceedings	ISL	http://www.landbunadur.is/landbunadur/wgsamvef.nsf/6d3d18e301de1f5e0025768c00561c33/ea2a821bb7a50dda002573220058e603?OpenDocument&Highlight=0,beit,sau%C3%B0f%C3%A9	unsuitable document type		
excluded	Ráðunautafundur um fôðuröflun, fôður og fôðrun 1975 - Efnisyfirlit		Ráðunautafundur			1975	1	conference proceedings	ISL	http://www.landbunadur.is/landbunadur/wgsamvef.nsf/6d3d18e301de1f5e0025768c00561c33/b5bd3ed801aa7d4d0025732200585895?OpenDocument&Highlight=0,beit,sau%C3%B0f%C3%A9	unsuitable document type		
excluded	Ráðunautafundur 1976 - Efnisyfirlit		Ráðunautafundur			1976	1	conference proceedings	ISL	http://www.landbunadur.is/landbunadur/wgsamvef.nsf/6d3d18e301de1f5e0025768c00561c33/dc82522d582851a20025732200575ee0?OpenDocument&Highlight=0,beit,sau%C3%B0f%C3%A9	unsuitable document type		
excluded	Ráðunautafundur 1977 - Efnisyfirlit		Ráðunautafundur			1977	1	conference proceedings	ISL	http://www.landbunadur.is/landbunadur/wgsamvef.nsf/6d3d18e301de1f5e0025768c00561c33/a2e210894f091c1a0025732200563fea?OpenDocument&Highlight=0,beit,sau%C3%B0f%C3%A9	unsuitable document type		
not found	A review of grazing experiments with sheep in Iceland.	Adalsteinsson S., Jónsson K.	Agricultural Research Institute (Mimeograph)			1973	R	Manuscript	EN		Never published		
not found	Gróðurathuganir á Hallormsstað	Bjarnason Á.H.	Fjölritað sem handrit, 26 s			1977	R	Manuscript	ISL		Never published		
not found	Beitarfræði fyrir bændaskóla	Þórhallsdóttir A.G.	Bændaskólinn á Hvanneyri.			1992	O	Manuscript	ISL		Never published		
not found	Niðurstöður gróðurmælinga 1961-1974	Þorsteinsson I.				1977	R	Manuscript	ISL		Never published		
not found	Stocking rates for sheep grazing under rangeland conditions in Iceland.	Arnalds A.	PhD thesis, Colorado State University, Fort Collins			1985	R	thesis	EN				
not found	Landnýtingartilraunir II	Arnalds A., Guðmundsson Ó.	Ráðunautafundur			1976	O	conference proceedings	ISL				
not found	Beitartilraunir á Hvanneyri.	Dýrmundsson Ó.R.	Ráðunautafundur			1977	R	conference proceedings	ISL				
not found	Yfirlit yfir beitartilraunir	Dýrmundsson Ó.R.	Ráðunautafundur			1977	R	conference proceedings	ISL				
not found	Mixed grazing of sheep and cattle under intensive conditions in Iceland	Dýrmundsson Ó.R.	28th Annual Meeting of the EAAP, 22-27 August, Brussels			1977	R	conference proceedings	EN				

not found	Utilization of communal rangelands in Iceland.	Dýrmundsson Ó.R.	NJF-seminar nr. 181. Jorderosion och fosfor-förluster i lantbruket, Laugarvatn, Island, 9.-13. August 1990. Mimeograph 5 pp.			1990	R	conference proceedings	EN				
not found	Changes in land utilization in Iceland with special reference to conservation of soil and vegetation.	Dýrmundsson Ó.R.	NJF-utredning/rapport, Oslo	94	106-113	1994	R	conference proceedings	EN				
not found	Sustainable farming in a difficult climate: the challenge of rocks and weather.	Dýrmundsson Ó.R.	Vermont Law School, USA, Friday 22 June 2007. Mimeograph 1 pp.			2007	R	conference proceedings	EN				
not found	Beitartilraunir á Hesti	Guðmundsson Ó.	Ráðunautafundur			1977	R	conference proceedings	ISL				
not found	The performance of suckling lambs grazing unfertilized and fertilized natural pasture and rangeland under sub-arctic conditions.	Guðmundsson Ó.	XVI International Grassland Congress Nice, France		1267-1268	1989	R	conference proceedings	EN				
not found	Extensive grazing systems for sheep in Iceland.	Guðmundsson og Þorgeirsson	40th Annual Meeting of the EAAP, 27-31 August, Dublin Ireland.		139-140	1989	R	conference proceedings	EN				
not found	Sauðfjárrækt og gróðurvernd	Hallgrímsson S.	Ráðunautafundur			1976	O	conference proceedings	ISL				
not found	FAO-beitartilraun	Jónsson J.	Ráðunautafundur			1973	R	conference proceedings	ISL				
not found	Vorbeit -- áhrif á uppskeru	Jónsson K.	Fjölrit frá Ráðunautafundi B.Í. og RALA	6		1974	R	conference proceedings	ISL				
not found	Landnýtingartilraunir, sem framlags njóta úr Þróunarsjóði Sameinuðu Þjóðanna	Pállson H.	Ráðunautafundur			1976	O	conference proceedings	ISL				
not found	Landnýtingartilraunir á Hesti (UNDP). Hagnýtar bráðabyrgðaniðurstöður	Pállson H.	Ráðunautafundur			1977	R	conference proceedings	ISL				
not found	Landgræðsla og búfjárframleiðsla	Runólfsson S.	Ráðunautafundur			1976	O	conference proceedings	ISL				
not found	Beitevald hos sau og rein på Vesturöræfi, Island.	Þórhallsdóttir A.G.	PhD thesis Agricultural University of Norway, Ås			1981	R	thesis	ISL				
not found	Gróðurmælingar í Húsafellsskógi	Þorsteinsson B.	BSc thesis, University of Iceland			1981	R	thesis	ISL				
not found	Landnýtingarplan		Ráðunautafundur			1976	O	conference proceedings	ISL				
not found	Bráðabirgðaskýrsla um rannsóknir Rala á Blöndusvæðinu 1989	Thorsteinsson I., Thorgeirsson H., Guðmundsdóttir K.	Rannsóknarstofnun landbúnaðarins			1990	R	report	ISL				
not found	Rannsóknir á ástandi og beitarþoli íslenskra gróðurlenda.	Þorsteinsson I.	Ársskýrsla rannsóknarráðs ríkisins			1978	R	report	ISL				

Appendix S2. Additional details on studies and data extraction for meta-analyses. Effect sizes for meta-analyses were calculated by estimating mean change (matched pairs; comparing mean values reported for grazed and non-grazed plots) or calculating Hedges' g (when mean, variance and sample size were reported separately for grazed and non-grazed plots).

Study	Number of independent comparisons	Original data	Processing	References
Biskupstungaafrétt	4	One fenced and one unfenced area per site; plots receiving different additional treatments (fertilised, fertilised+seeding) were established in the fenced and unfenced areas at each site. Data on vegetation cover (% cover of growth forms) and plant height in fertilized plots sown separately with different grass species (4 sown species; 3 plots inside, 3 outside fence per species at each site; Friðriksson 1960). Data on vegetation cover (% cover of growth forms) in plots with different levels of fertiliser (3 levels; Þorsteinsson and Sigurbjörnsson, 1961)	Only mean values per treatment at each of the four sites are provided with no measure of error; the mean change between grazed and non-grazed areas was calculated per additional treatment and site.	Friðriksson 1960; Þorsteinsson and Sigurbjörnsson, 1961
Mosfellsheiði	1	5 fenced and 5 unfenced areas along an elevation gradient; plots receiving different additional treatments (fertilised+seeding) were established in the fenced and unfenced areas at each elevation level. Data on vegetation cover (% cover of growth forms).	Only mean values per elevation are provided with no measure of error, so only one data point per elevation level; the mean change between grazed and non-grazed areas was calculated per elevation level (n=5), and elevations were pooled.	Friðriksson 1969
Borgarfjörður	1	No description of experimental design. Reports values of cover (% cover of growth forms) in grazed plots and plots protected for 5 or 24 years.	Only mean values per treatment (grazed, protected 5 years or protected 24 years) with no measure of error; mean change (grazed vs. non-grazed) calculated per time protected (n=2) using the same 'grazed' plot as reference level.	Þorsteinsson 1961

Lómatjarnir	4	Transects in different topographical units on an island that had never been grazed and the surrounding grazed land. The different topographical units are considered independent comparisons. Data on vegetation and soils.	Original data extracted for each quadrat. For each topographical unit there is information for several sampling points; means, SD and n could be calculated for grazed and non-grazed areas (independent groups).	Jónsdóttir 1984
Hallormstaður A	1	Data on average frequency of plant species (occurrence in 125 subplots), inside and outside a fence (~30 yrs' protection) in 6 habitat types.	Plant species data grouped into 'growth forms' and transformed to relative cover (occurrence over 125 subplots divided by the total number of occurrences across plant growth form type), for each habitat and grazing treatment. Mean change (grazed vs. non-ungrazed) calculated per habitat, habitats pooled	Ragnarsson and Steindórsson 1963
Hallormstaður C	1	Data on moss depth in a grazed valley and a site that had been protected for over 80 years, at treeline.	Original data extracted from Table 4. Means and SE reported, sample size inferred from sampling design; SE transformed back to $SD=SE*\sqrt{n}$ (independent groups).	Hecht et al. 2007
Hnausheiði og Auðkúluheiði	2	Data on tiller density of the sedge <i>Carex bigelowii</i> and dry mass of the moss <i>Racomitrium lanuginosum</i> .	Original data extracted from Table 2. Means and SE reported, sample size inferred from sampling design; SE transformed back to $SD=SE*\sqrt{n}$ (independent). Sedge tiller density and dry moss mass used as proxies for % cover of sedges and moss depth, respectively.	Jónsdóttir 1991
Örfoka	13	Data on plant cover and soil parameters. Study aimed at assessing the effect of excluding sheep on succession of sparsely vegetated land, conducted at 12 sites (one site had 2 subsites, yielding 13 independent comparisons).	Data extracted from figures presenting means, SE and n, for multiple plots within and outside fences at each site (independent groups). SE reported (transformed back to $SD=SE*\sqrt{n}$).	Magnússon and Svavarsdóttir 2007; Magnússon 2008

Tundra diversity	1	Data on plant species richness and moss depth in valleys (3 sites) that are currently grazed by sheep, and valleys (3 sites) that have been abandoned for >60 years. Data pooled across the 6 valleys, yielding 1 independent comparison.	Data extracted from Figure 2 (Mörsdorf 2015) for plant species richness, and from Figure 3.2 (Liebig 2016) for moss depth. Data reported as means and 95% confidence intervals (transformed to $SD = \sqrt{n} * \text{halfCI} * 2/3.92$), or means and SE (transformed back to $SD = SE * \sqrt{n}$) for each site (independent groups). Sample sizes (n) calculated from sampling design description.	Mörsdorf 2015; Liebig 2016
Auðkúluheiði og Eyvindastaðaheiði	6	Data on yield and other vegetation and soil variables for plots with different fertilization regimes (different amounts 0-400 kg/ha, yearly or every second year) at 7 different sites (not all variables measured at each site)	Data extracted from figures presenting means for different fertilization regimes. Mean change (grazed vs. non-grazed) calculated per fertilization treatment, treatments pooled. Bare ground cover calculated from total plant cover.	Þorgeirsson et al 1982; Helgadóttir et al 1983; Þorsteinsson et al 1984; Þorsteinsson 1984, 1991; Rannsóknarstofnun landbúnaðarins, 1985, 1986; Þorsteinsson et al 1988, 1989; Aradóttir et al 1987; Arnalds et al 1987
Hálslón	1	Data on percent cover of different growth forms and groups (grasses, shrubs, moss), vegetation height and soil parameters in plots with different levels of fertilization (0 to 200 kg/ha). Also information on cover and height of Salix spp. (see Appendix S3)	Data extracted from figures presenting means for different levels of fertilization (0 to 200 kg/ha). Mean change (grazed vs. non-grazed) calculated per fertilization treatment, treatments pooled. Bare ground cover calculated from total plant cover.	Arnalds et al 2010
Blöndulón	1	Data on percent cover of vegetation and species richness within and outside fence.	Data extracted from Figure 16 presenting means for plots at increasing distances from edge. Mean change (grazed vs. non-grazed) calculated per distance from edge. Bare ground cover calculated from total plant cover.	Magnússon og Metúsalemsson 2014
Viðey	1	Comparison between an island (never grazed) and its surroundings (presents data on other sites outside the island, but we take for comparison the well vegetated area on the South Bank, which had been protected for 7 years)	Data reported as means and SE (independent groups) for a site that had never been grazed and grazed sites; SE transformed back to $SD = SE * \sqrt{n}$. Sample sizes inferred from sampling design (number of quadrats per plot for vegetation sampling; number of plots for other measures).	Valdimarsdóttir and Magnússon 2013

Utilization and Conservation of Rangeland		<p>Large experiment replicated at 9 sites across Iceland to assess the impacts of different densities of sheep, mostly focusing on forage quality and lamb production. The experimental manipulations started in 1976 at most sites. In cases where plots received additional treatments (e.g. fertilization, shrub removal) these plots are treated as independent comparisons in the analysis.</p>	<p>Data reported as means and SE (independent groups) for plots within a site that received low, medium or high sheep densities. We include data from 1978 (two years after the start of the experiment), except for digestibility of plant materials that was reported in 1977, because later data were not available for most sites. For two sites comparisons between high and medium densities were used as they were the only data available.</p>	Guðmundsson and Arnalds 1979
---	--	--	---	------------------------------

Appendix S3. Studies reporting variables that could not be included in the meta-analyses due to insufficient sample size. We assessed the differences between areas with different grazing treatments (either grazed vs. non-grazed areas or areas with different grazing pressure) using t-tests (t-values, degrees of freedom and p-values reported here). Significant p-values indicate difference between treatments, with positive signs of t indicating higher values in the first treatment of the comparison (i.e. grazed or high-intensity plots).

Study	Reference	Type of comparison	Variable	t	df	p-value
Auðkúluheiði og Eyvindastaðaheiði	Þorgeirsson et al 1982; Helgadóttir et al 1983; Þorsteinsson et al 1984; Þorsteinsson 1984, 1991; Rannsóknarstofnun landbúnaðarins, 1985, 1986; Þorsteinsson et al 1988, 1989; Aradóttir et al 1987; Arnalds et al 1987	grazed vs. non-grazed (paired t-test)	Shannon's diversity index for vascular plant communities	3.603	7.00	0.009
			evenness of vascular plant communities	2.661	7.00	0.032
Háslón	Arnalds et al 2010	grazed vs. non-grazed (paired t-test)	percent cover of planted willows	-0.310	3.00	0.777
			height (cm) of planted willows	0.154	3.00	0.888
Lómatjarnin	Jónsdóttir 1984	grazed vs. non-grazed (paired t-test)	percent water content of soils	-2.359	1.84	0.1535
			percent content of organic matter	-1.626	4.05	0.178
Utilization and Conservation of Rangeland	Magnusson and Magnusson 1992	intensity (high vs low sheep density)	soil pH	-1.563	16.46	0.137
			soil C content (%)	2.432	15.44	0.028
			soil N content (%)	2.480	15.06	0.025
			soil K content (meq/100 g)	2.420	13.52	0.030
			percentage of bare ground	0.239	21.53	0.813
			soil depth (cm)	1.768	15.13	0.097
hummock height (cm)	-1.636	16.86	0.120			

Appendix S4. Extended results and plots for each of the meta-analyses showing the study sites and the overall effect size for all the variables

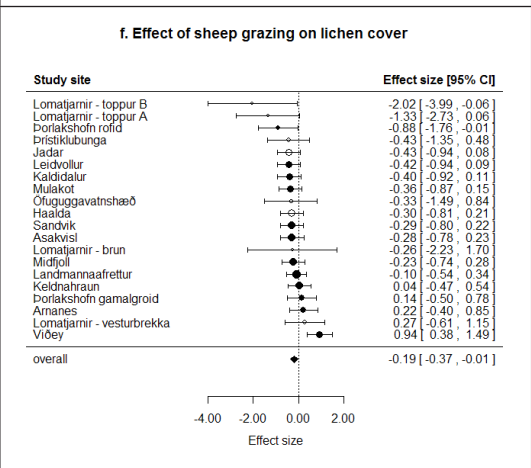
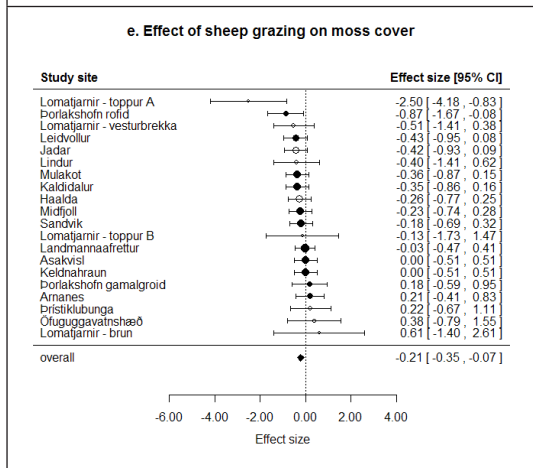
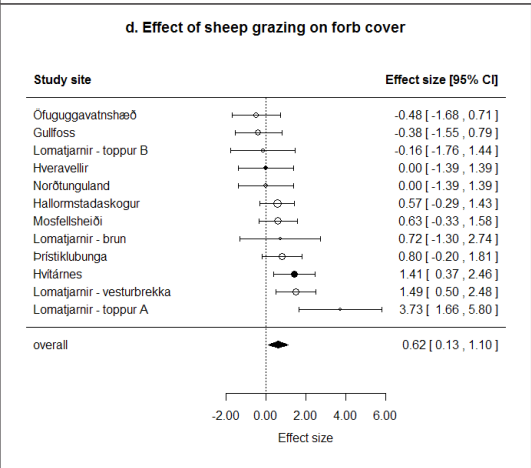
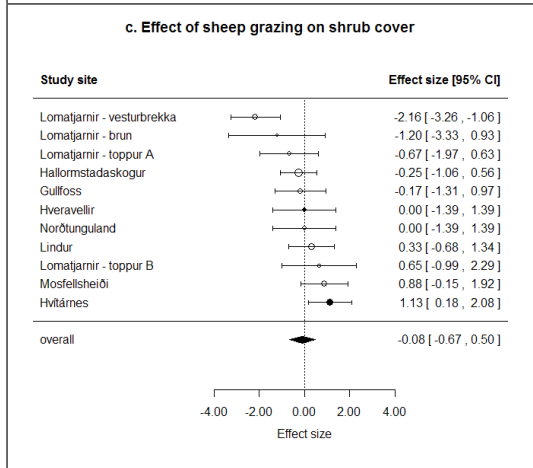
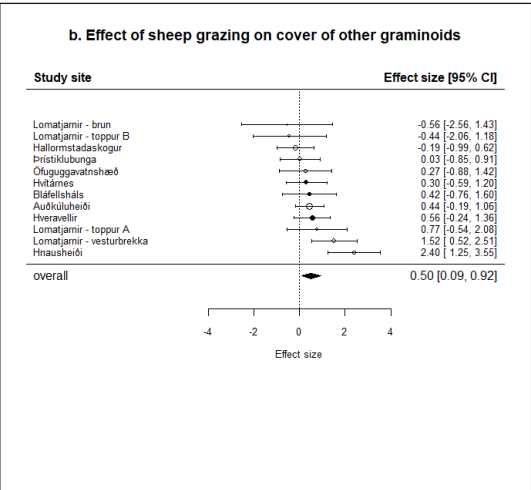
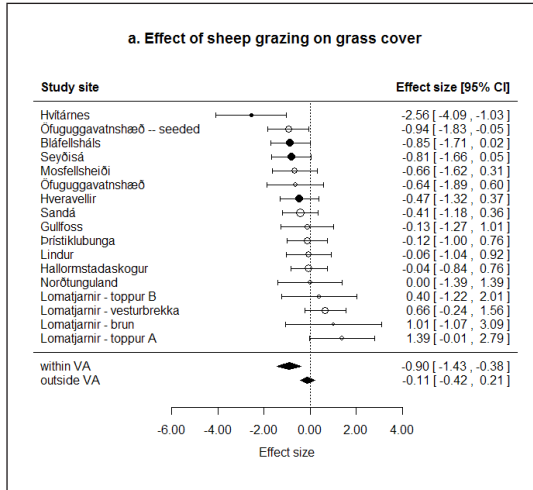
Effects of sheep grazing on percent cover of different plant groups

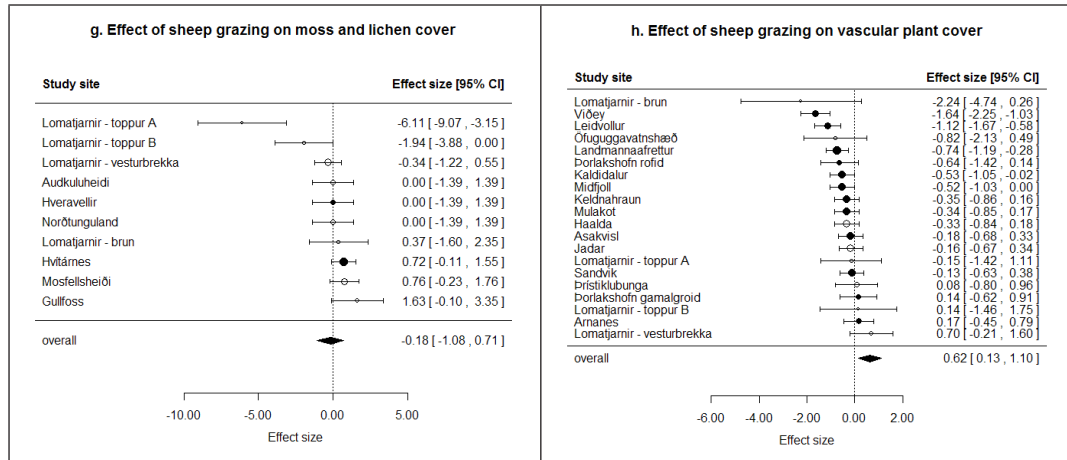
7 studies (17 independent comparisons) assessed the effect of grazing on the percent cover of grasses. Overall, grazing reduced the percentage of grass cover ($ES=-0.312\pm 0.157$, $z=-1.996$, $p=0.046$), but there was some heterogeneity among the effect sizes ($Q=27.504$, $df=16$, $p=0.036$). Including study location as a moderator significantly improved the model ($Q_m=6.616$, $df=1$, $p=0.010$) and accounted for this heterogeneity (i.e. the test for residual heterogeneity (Q_e) was not significant: $Q_e=20.165$, $df=15$, $p=0.166$). Studies reported consistently more negative effects of grazing within the volcanic active zone ($ES=-0.797\pm 0.310$, $z=-2.572$, $p=0.010$; **Figure S1a**). The effect of grazing on other graminoids was reported by 7 studies, for a total of 14 independent comparisons. Overall, grazed areas had higher percentage of graminoid cover ($ES=0.451\pm 0.190$, $z=2.377$, $p=0.018$; **Figure S1b**). The test for heterogeneity ($Q=22.189$, $df=13$, $p=0.053$) suggested little heterogeneity among the true effects; given that only 3 comparisons from a single study originated from the volcanic zone, this variable could not be included as a moderator in the analyses.

There was no significant effect of sheep grazing on the percentage of shrub cover ($ES=-0.085\pm 0.298$, $z=-0.284$, $p=0.777$; **Figure S1c**), as reported by 6 studies comprising 11 independent comparisons. There was significant heterogeneity in true effects ($Q=26.674$, $df=10$, $p=0.003$), but since only two comparisons from a single study reported the effects on the volcanic active zone this variable could not be included as a moderator in the analysis. The effect of grazing on percent cover of forbs was reported by 6 studies, for a total of 12 independent comparisons. Overall, grazed areas had higher percentage of forb cover ($ES=0.617\pm 0.248$, $z=2.491$, $p=0.013$; **Figure S1d**). The test for heterogeneity ($Q=22.531$, $df=11$, $p=0.021$) suggested some heterogeneity among the true effects, but study location could not be included as a moderator in the analysis because it was only reported by a single study (2 comparisons).

The effect of sheep grazing on the percent cover of cryptogams was assessed either for moss (4 studies, 20 comparisons) and lichen separately (4 studies, 20 comparisons), or for moss and lichen combined (5 studies, 10 comparisons). Sheep grazing reduced the percent cover of moss ($ES=-0.206\pm 0.071$, $z=-2.889$, $p=0.004$; **Figure S1e**). There was no significant evidence for heterogeneity in effect sizes ($Q=19.776$, $df=19$, $p=0.408$); the inclusion of study location as moderator did not have a significant effect ($ES=0.126\pm 0.164$, $z=0.767$, $p=0.443$). Sheep grazing reduced the percent cover of lichens ($ES=-0.191\pm 0.093$, $z=-2.052$, $p=0.040$; **Figure S1f**). The test for heterogeneity ($Q=32.283$, $df=19$, $p=0.029$) suggested some heterogeneity among the true effects, but the inclusion of volcanic active zone as a moderator did not have a significant effect ($ES=0.273\pm 0.215$, $z=1.274$, $p=0.203$), suggesting that other moderators may be accounting for heterogeneity in effect sizes. When the percent cover of mosses and lichens was assessed together, the effect of sheep grazing was not significant ($ES=-0.182\pm 0.467$, $z=-0.397$, $p=0.691$; **Figure S1g**). The test for heterogeneity ($Q=29.028$, $df=9$, $p=0.001$) suggested considerable heterogeneity among effect sizes but there were not enough studies to include volcanic active zone as a moderator in the analyses (only 2 comparisons from a single study).

Figure S1. Meta-analyses for the effects of sheep grazing on percent cover of different plant groups: grasses (a), other graminoids (b), shrubs (c), forbs (d), mosses (e), lichens (f), mosses and lichens combined (g) and total vascular plant cover (h). Each row represents an independent comparison (study site) and its corresponding effect size and 95% confidence intervals, for sites within (filled symbols) or outside (open symbols) the volcanic zone. Symbol size indicates sample size. Separate summary effect sizes are provided for within and outside the volcanic zone if the inclusion of this variable had a significant effect.





The effect of sheep grazing on overall vascular plant cover was reported in 4 studies, for a total of 20 independent comparisons. Sheep grazing reduced the percent cover of vascular plants ($ES=-0.398\pm 0.116$, $z=-3.435$, $p<0.001$; **Figure S1h**). The test for heterogeneity ($Q=43.342$, $df=19$, $p=0.001$) suggested a significant amount of heterogeneity in true effects but including the volcanic zone in each case as a moderator in the analysis did not significantly contribute to explaining this heterogeneity ($ES=-0.356\pm 0.250$, $z=-1.424$, $p=0.155$).

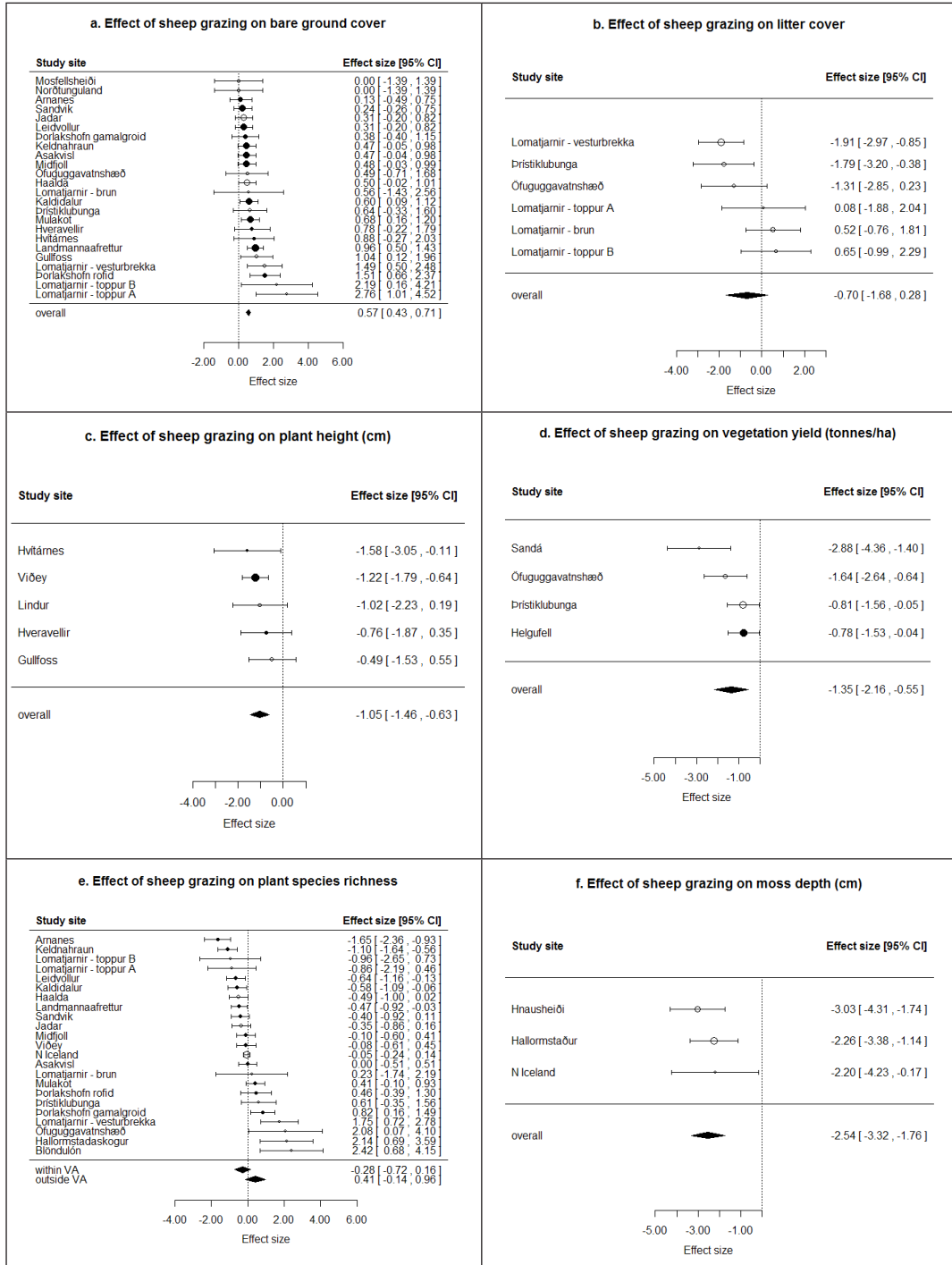
Effects of sheep grazing on other vegetation variables

Sheep grazing significantly increased the percent cover of bare ground ($ES=0.571\pm 0.071$, $z=8.009$, $p<0.001$; **Figure S2a**). The effect of sheep grazing on the amount of bare ground was assessed by 7 studies (25 independent comparisons), and there was no evidence for heterogeneity among effect sizes ($Q=28.512$, $df=23$, $p=0.197$); in accordance, including study locality as a moderator had no significant effect ($ES=-0.086\pm 0.170$, $z=-0.506$, $p=0.613$).

The percent cover of plant litter was measured in 2 studies outside the volcanic zone that contributed 6 independent comparisons. The effect of sheep grazing on litter cover was not significant ($ES=-0.700\pm 0.501$, $z=-1.398$, $p=0.162$; **Figure S2b**). There was some heterogeneity in true effects ($Q=14.382$, $df=5$, $p=0.013$), but no moderators could be included in the analysis due to the small sample size.

Sheep grazing significantly reduced vegetation height ($ES=-1.046\pm 0.210$, $z=-4.984$, $p<0.001$; **Figure S2c**) and vegetation yield (tonnes per hectare; $ES=-1.353\pm 0.411$, $z=-3.300$, $p=0.001$; **Figure S2d**). The impact of sheep grazing on vegetation height was reported in 3 studies (5 independent comparisons) and only a single study (4 independent comparisons) in the case of yield. In both cases the test for heterogeneity was non-significant (vegetation height: $Q=2.212$, $df=4$, $p=0.697$) or marginally significant (yield: $Q=7.872$, $df=3$, $p=0.050$), but no moderators could be included in the analyses due to small sample sizes.

Figure S2. Meta-analyses for the effects of sheep grazing on other vegetation variables: grasses (a), percent cover of litter (b), vegetation height (cm; c), vegetation yield (tonnes/ha; d), vascular plant species richness (e), and moss depth (cm; f). Each row represents an independent comparison (study site) and its corresponding effect size and 95% confidence intervals, for sites within (filled symbols) or outside (open symbols) the volcanic zone. Symbol size indicates sample size. Separate summary effect sizes are provided for within and outside the volcanic zone if the inclusion of this variable had a significant or marginally significant effect.



Species richness of vascular plants was reported in 7 studies (23 independent comparisons). The effect of sheep grazing did not significantly differ from zero ($ES=-0.006\pm 0.182$, $z=-0.032$, $p=0.162$;

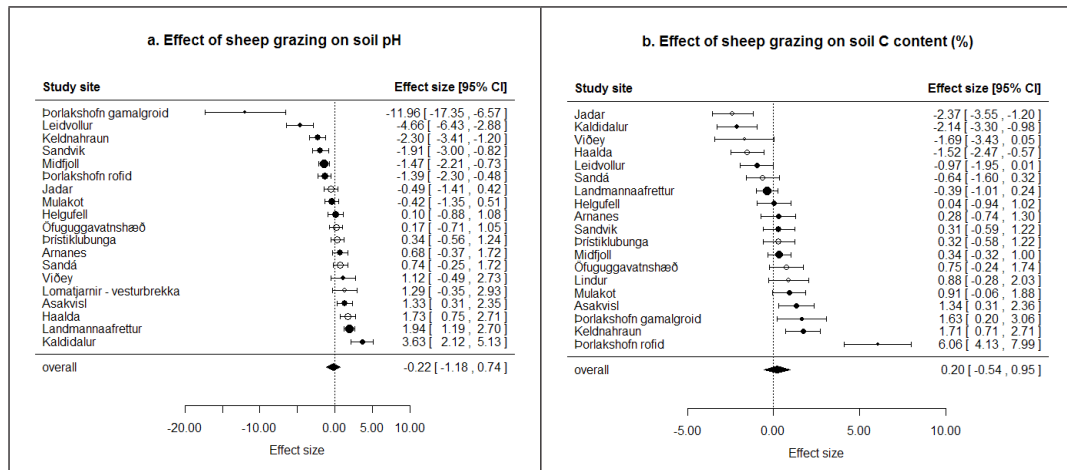
Figure S2e). There was considerable heterogeneity in true effect sizes ($Q=96.569$, $df=22$, $p<0.001$), and study location had a marginally significant effect, with studies within the volcanic zone tending to report more negative effects of sheep grazing than studies outside the volcanic zone ($ES=-0.690\pm 0.361$, $z=-1.913$, $p=0.056$).

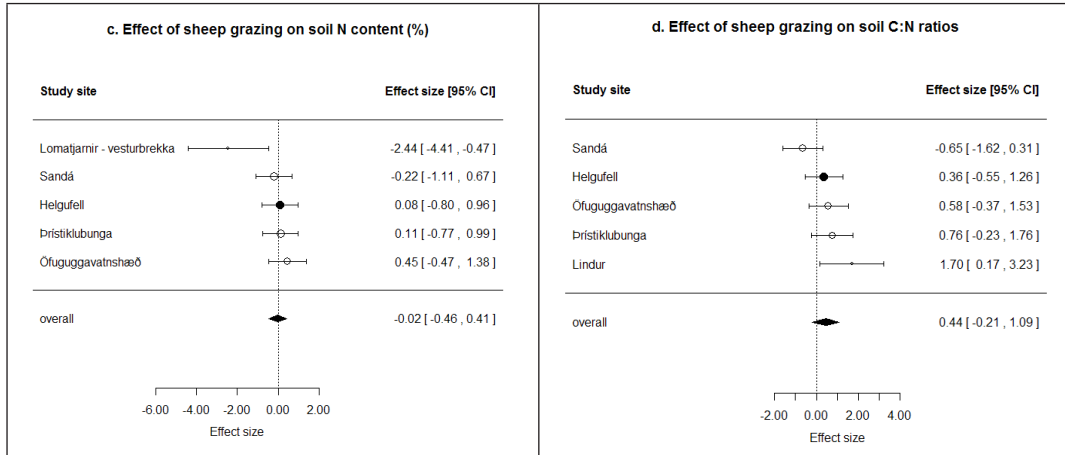
Finally, 3 studies outside the volcanic zone reported the effects of sheep grazing on moss depth, in three independent comparisons. Sheep grazing significantly reduced moss depth ($ES=-2.535\pm 0.398$, $z=-6.371$, $p<0.001$; **Figure S2f**) and the test for heterogeneity was non-significant ($Q=0.900$, $df=2$, $p=0.638$).

Effects of sheep grazing on soil variables

The effect of sheep grazing on soil parameters focused on soil pH, C and N content, C:N ratios and the abundance of soil collembolans. 4 studies reporting on 19 independent comparisons measured soil pH and found that overall there was no significant effect of sheep grazing on soil pH ($ES=-0.218\pm 0.490$, $z=-0.444$, $p=0.657$; **Figure S3a**). The test of heterogeneity indicated considerable heterogeneity in true effects ($Q=174.827$, $df=18$, $p<0.001$), but study location did not have a significant influence on the effect of sheep grazing ($ES=-1.244\pm 1.050$, $z=-1.184$, $p=0.236$).

Figure S3. Meta-analyses for the effects of sheep grazing on soil variables: pH (a), C content (%; b), N content (%; c), C:N ratio (d), and abundance of soil collembolans (e). Each row represents an independent comparison (study site) and its corresponding effect size and 95% confidence intervals, for sites within (filled symbols) or outside (open symbols) the volcanic zone. Symbol size indicates sample size.





Sheep grazing had no effect on C (ES=0.205±0.380, z=0.539, p=0.590; **Figure S3b**) or N content in soils (ES=-0.024±0.222, z=-0.107, p=0.915; **Figure S3c**). C content was reported in 4 studies (19 comparisons). The test for heterogeneity indicated a significant variability in true effect sizes (Q=119.272, df=18, p<0.001), but including study location as a moderator did not have a significant effect (ES=1.232±0.759, z=1.623, p=0.105). N content in soils was measured in 2 studies (5 comparisons), and the test for heterogeneity was not significant (Q=7.156, df=4, p=0.128). Soil C:N ratios were reported in 2 studies (5 comparisons). Overall, sheep grazing had no effect on C:N ratios (ES=0.441±0.330, z=1.337, p=0.181; **Figure S3d**), and the test for heterogeneity in true effects was non-significant (Q=7.976, df=4, p=0.093).

Only one study (4 independent comparisons) reported the effects of sheep grazing on soil organisms and found that sheep grazing reduced the abundance of collembolans (ES=-0.739±0.328, z=-2.255, p=0.024; **Figure S4**). The test of heterogeneity was not significant (Q=0.510, df = 3, p=0.917).

Figure S4. Meta-analyses for the effects of sheep grazing on the abundance of soil collembolans. Each row represents an independent comparison (plots receiving different fertilization treatments) and its corresponding effect size and 95% confidence intervals. All sites were outside the volcanic zone. Symbol size indicates sample size.

